

5" Vacuum Shroud

Model:

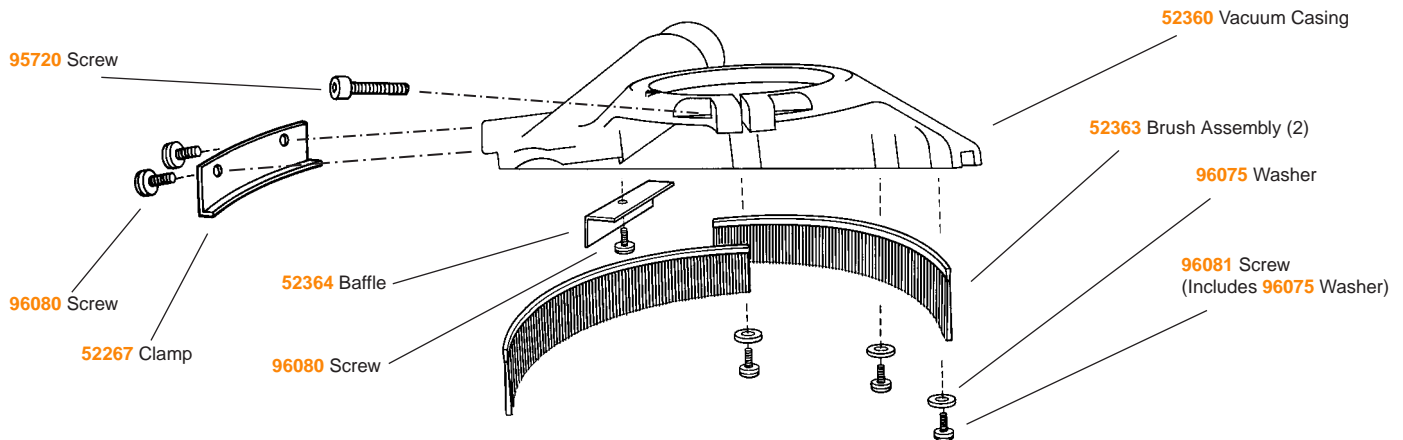
52300 — Shroud

Compatible with Dynabrade 5" Right Angle Sanders



WARNING

These shrouds are only intended for use on non-metal (low heat generating) surfaces. Not intended for use with Depressed Center Wheel Grinders or Type 27 Grinding Wheels. Always operate, inspect and maintain Dynabrade Air Tools and Accessories in accordance with the safety code for Portable Air Tools (ANSI B186.1) and any other applicable safety codes and regulations.



Mounting Instructions

(Refer to individual machine parts breakdown page for additional part identification)

- 1.) Invert Disc Sander into soft jaw vise so back-up pad and spindle are facing upward.
- 2.) Remove flanging and back-up pad.
- 3.) Mount vacuum shroud onto machine housing. Tighten **95720** Set Screw to secure vacuum shroud to machine.
- 4.) Check orientation of vacuum shroud. For normal use, the arrow on the shroud should be aligned to about the 1:00 o'clock position. If realignment is necessary, loosen the **95720** Screw on the vacuum shroud and rotate casing. Retighten when proper position is achieved.

Note: The arrow on the shroud indicates the point at which the sanding pad should contact the work surface. When sanding, contact to work surface should be maintained at the arrow location for best vacuuming results.

Directions for Installing Dust Brushes on Dynabrade 5" Vacuum Guards

- 1.) Loosen **96081** Screws (3) and **96080** Screws (2) from vacuum guard.
- 2.) Install **52363** Brushes in groove on vacuum casing.
- 3.) Tighten **96081** Screws (3) so as plastic washer on screw holds metal strip on brush down into position.
- 4.) Tighten **96080** Screws (2) so **52267** Clamp holds metal strip on brush down into position.

