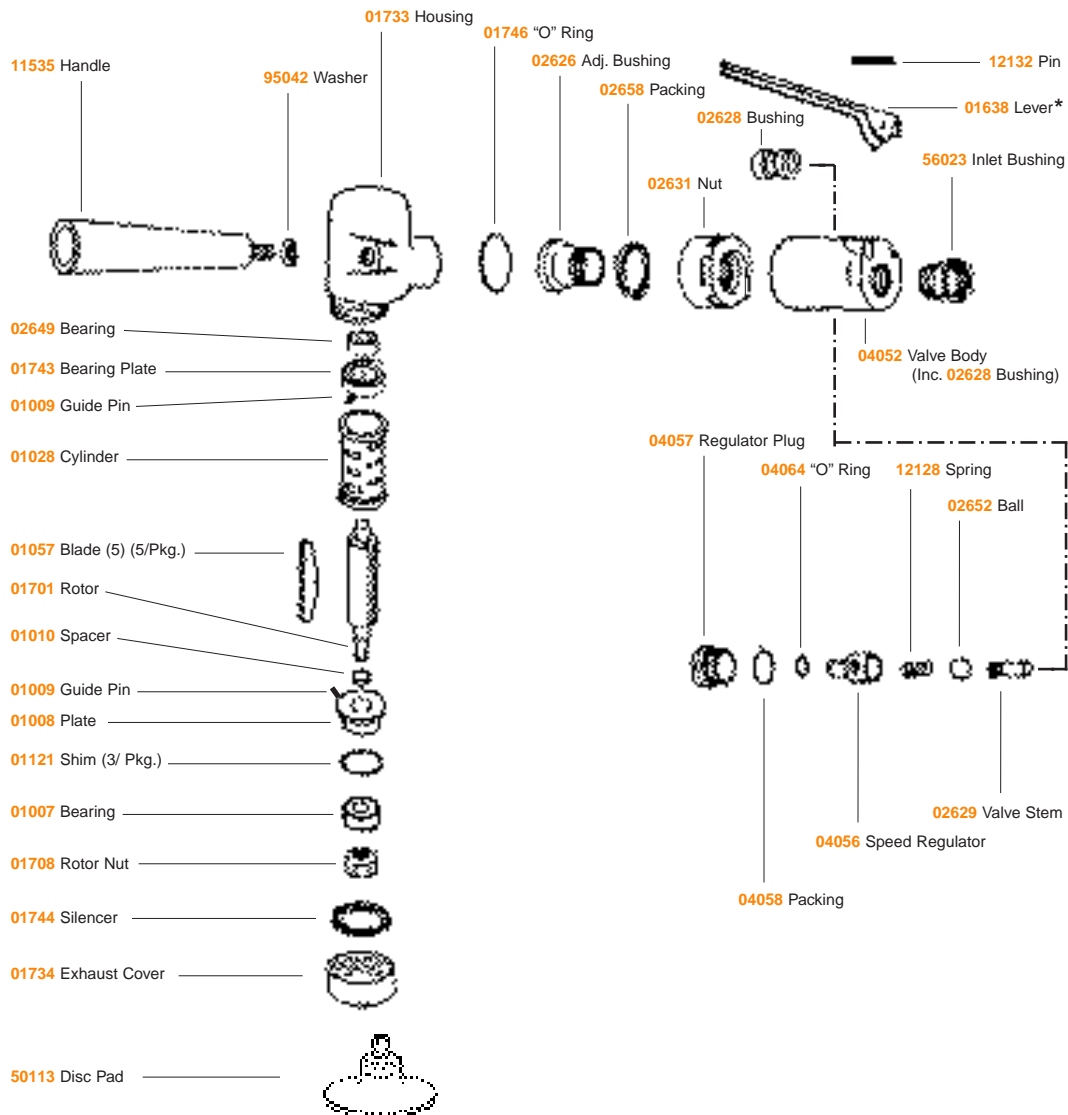


Disc Sander

Model:
50240 — 15,000 RPM



Always operate, inspect and maintain this tool in accordance with the Safety Code for portable air tools (ANSI B186.1) and any other applicable safety codes and regulations. Please refer to Dynabrade's Warning/Safety Operating Instructions for more complete safety information.



* 01637 Safety lock lever assembly available.

Optional Accessories



- 50061** Collet Assembly Includes:
- 50062** Collet Body
- 50063** Collet Cap
- 50064** 1/4" Collet Insert



- 53032** 1/4" Drill Chuck Includes:
- 53032** Mated Chuck Key



- 50065** 1/8" Collet Insert

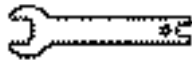


Dynaswivel®

Swivels 360° at two locations which allows an air hose to drop straight to the floor, no matter how the tool is held.

- **95460** 1/4" NPT.
- **95461** 3/8" NPT.
- **95462** 1/2" NPT.

Wrenches



- 95281** 19 mm wrench

IMPORTANT: ALL DYNABRADE AIR TOOLS MUST BE USED WITH A FILTER-REGULATOR-LUBRICATOR TO MAINTAIN ALL WARRANTIES

IMPORTANT

- Tool RPM rating must never exceed abrasive/accessory RPM rating, regardless of the tool's capacity.
- Check tool speed regularly with a tachometer. If tool is operating at a higher speed than the RPM marked on the tool, the tool should be serviced to correct the cause before use.
- **11289** Air Line Filter-Regulator-Lubricator – Provides water contaminants and micro-mist lubrication of pneumatic components; operates 28 CFM @ 90 PSI; has 3/8" female ports.
- Gear case of this Dynabrade air tool should be lubricated every 50 hours by using **95541** Grease Gun and **95542** Grease. To reorder:
 - **95541** – Push-type grease gun; for one-hand operation.
 - **95542** – Grease (10 oz. tube; 283.5 g.) Multi-purpose for all types of bearings, cams, gears. High film strength; excellent resistance to water, steam, etc. workable range 0° F to 300° F.

Note: To order replacement parts specify the model and serial number of your machine.

Warning: Hand, wrist and arm injury may result from repetitive work motion and overexposure to vibration.

