

.4 Hp/7°/Rear Exhaust 2" Disc Sander

Air Motor and Machine Parts

Model:
52502 — 30,000 RPM

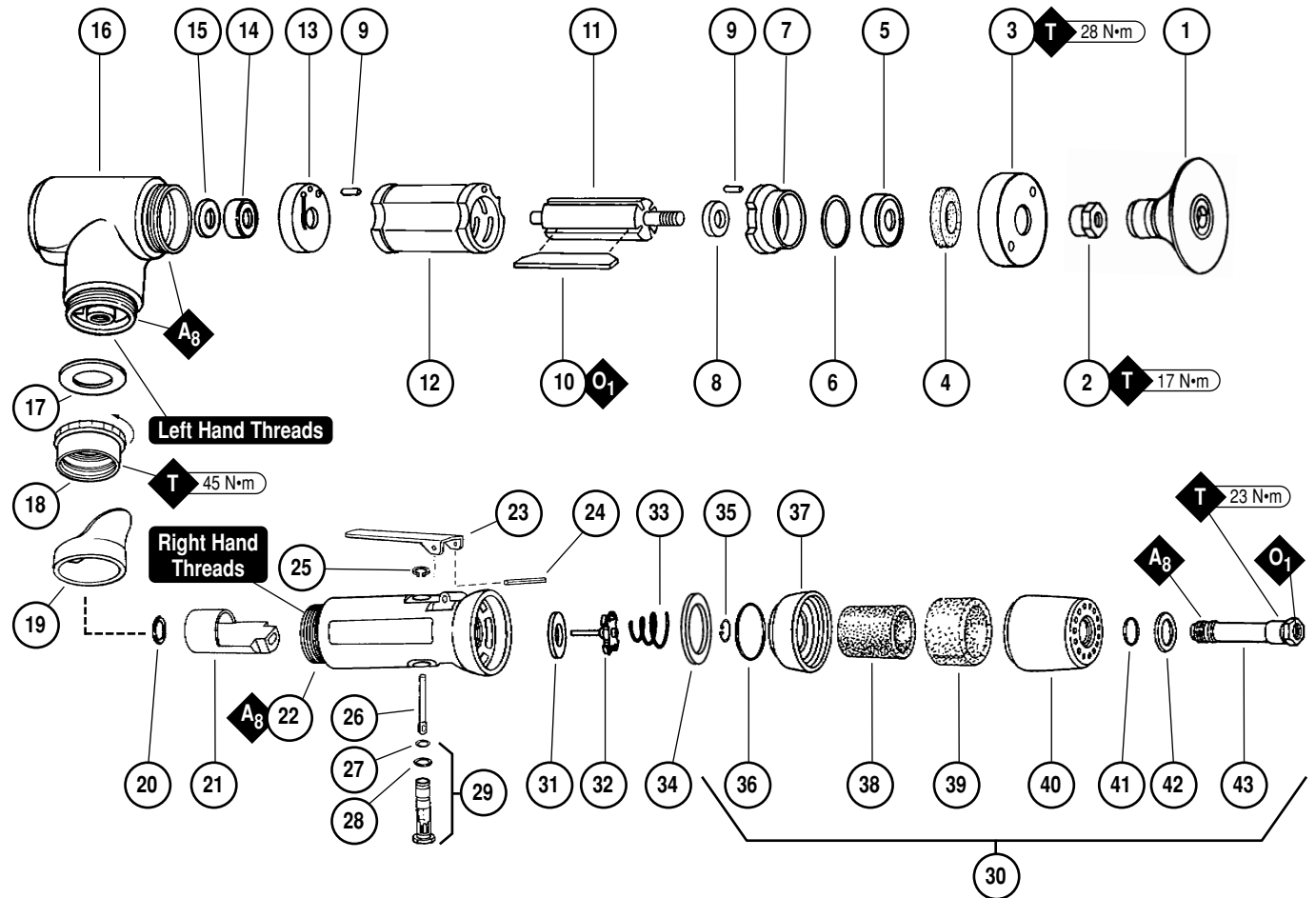
O	Oil: O ₁ = Air Lube	KEY
A	Adhesive: A ₈ = Loctite #567	
T	Torque: N•m x 8.85 = In. - lbs.	

⚠ WARNING

Always operate, inspect and maintain this tool in accordance with the Safety Code for portable air tools (ANSI B186.1) and any other applicable safety codes and regulations. Please refer to Dynabrade's Warning/Safety Operating Instructions for more complete safety information. See inside for Important Operating, Maintenance and Safety Instructions.

Index Key

No.	Part #	Description
1	50110	2" 3M Roloc® Disc
2	50133	Adapter
3	01560	Exhaust Cover
4	01580	Silencer
5	02649	Bearing
6	54529	Shim Pack (3/pkg.)
7	01478	Front Bearing Plate
8	01479	Spacer
9	50767	Pin (2)
10	01480	Blades (4/pkg.)
11	01594	Rotor
12	01476	Cylinder
13	02673	Rear Bearing Plate
14	02696	Bearing
15	02679	Shield
16	01546	Housing
17	01548	Gasket
18	01461	Lock Nut
19	01558	Collar
20	95523	O-Ring
21	01470	Insert
22	01488	Housing
23	01448	Throttle Lever
24	01462	Safety Throttle Lever
25	12132	Pin
26	95558	Retaining Ring
27	01449	Valve Stem
28	95730	O-Ring
29	01024	O-Ring
30	01469	Speed Regulator
31	94520	Muffler Assembly
32	01464	Seal
33	01472	Tip Valve
34	01468	Spring
35	01564	Spacer
36	95711	Retaining Ring
37	95438	O-Ring
38	94521	Muffler Base
39	94524	Sintered Muffler
40	94525	Felt Muffler
41	94522	Muffler Cap
42	95375	O-Ring
43	94526	Spacer
44	94523	Inlet Adapter



Note: To reorder replacement parts, specify the Model#, Serial#, and RPM of your machine.

