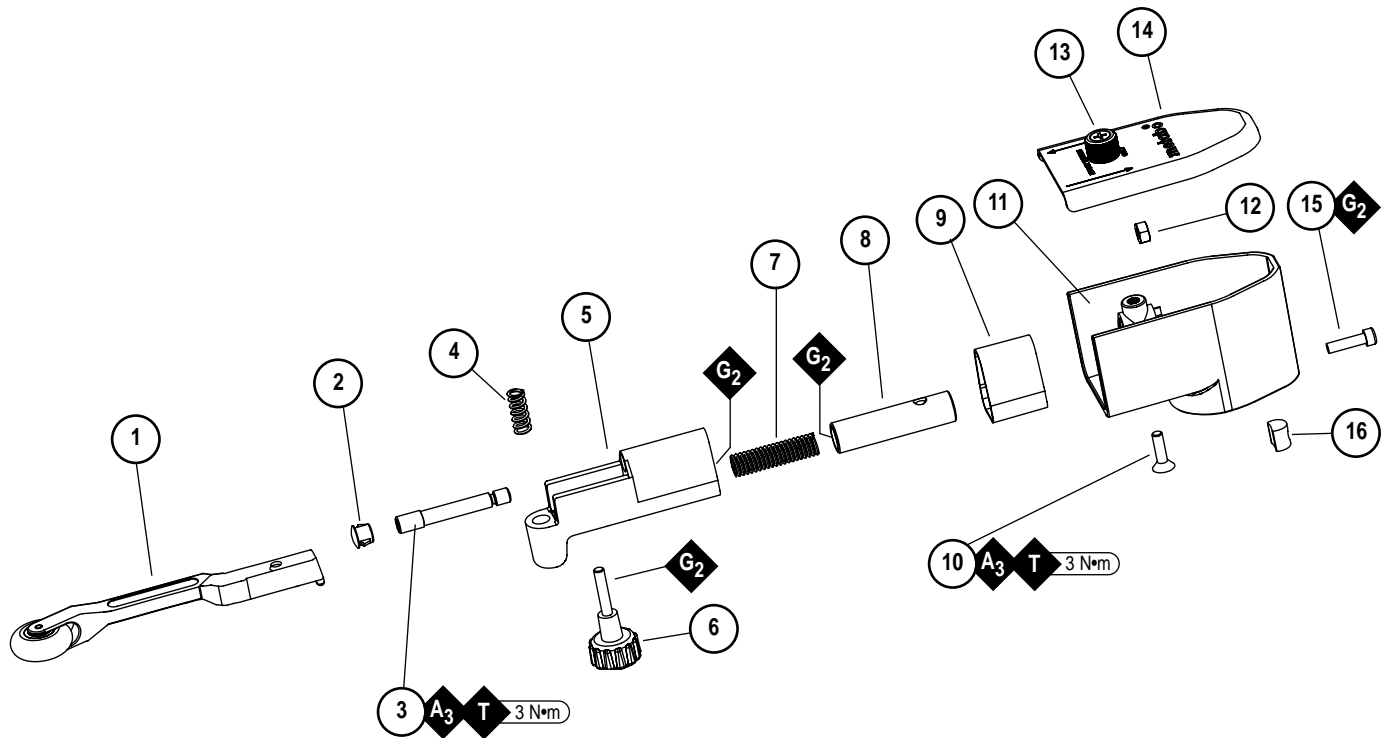


# 15381 – Belt Housing Assembly



**WARNING** Always operate, inspect and maintain this tool in accordance with the Safety Code for portable air tools (ANSI B186.1) and any other applicable safety codes and regulations. Please refer to Dynabrade's Warning/Safety Operating Instructions for more complete safety information.



Index Key		
No.	Part #	Description
1	10976	Contact Arm Assy.
2	96334	Plug
3	15308	Guide Post
4	11040	Spring
5	15306	Tension Arm
6	40502	Knob Assy.
7	95426	Spring
8	15307	Tension Shaft
9	15309	Dust Cover
10	95217	Screw
11	15298	Housing
12	96335	Hex Nut
13	15329	Screw
14	10974	Guard Assy. (Includes 15329 Screw)
15	01678	Screw
16	40029	Motor Lock

KEY	
<b>O</b>	Oil: O <sub>1</sub> = Air Lube
<b>A</b>	Adhesive: A <sub>3</sub> = Loctite #242
<b>G</b>	Grease: G <sub>2</sub> = Loctite #771
<b>T</b>	Torque: N•m x 8.85 = In. - lbs.

**Additional Contact Arms Available:**

Part#	Description	Abrasive Belt Size
10975	5/8" Dia. x 1/8" W, Rubber Wheel, with 1/4" (6 mm) W Platen	6 mm W x 457 mm L Belts
10977	3/4" Dia. x 5/8" W, Rubber Wheel, with 3/4" (19 mm) W Platen	16 mm W or 19 mm W x 457 mm L Belts
10978	1" Dia. x 3/8" W, Tapered Rubber Wheel, No Platen/Offset Design	6 mm W x 457 mm L Belts
10979	5/8" Dia. x 3/8" W, Rubber Wheel, Banana Arm	13 mm W x 457 mm L Belts

