

For Serial No. 9J1264 and Higher

Models:

- 51201** — 3,200 RPM, 1/4" Collet
51202 — 5,000 RPM, 1/4" Collet
51204 — 3,200 RPM, 6mm Collet
51205 — 5,000 RPM, 6mm Collet

KEY	
O	Oil: O ₁ = Air Lube
A	Adhesive: A ₂ = Loctite #271 A ₈ = Loctite #567
T	Torque: N•m x 8.85 = In. - lbs.
G	Grease: G ₁ = Lubriplate 630 AA

Parts Page Reorder No. PD05•46
 Effective December, 2005
 Supersedes PD00•30R

.4Hp/Straight-Line/Rear Exhaust Die Grinder

Air Motor and Machine Parts

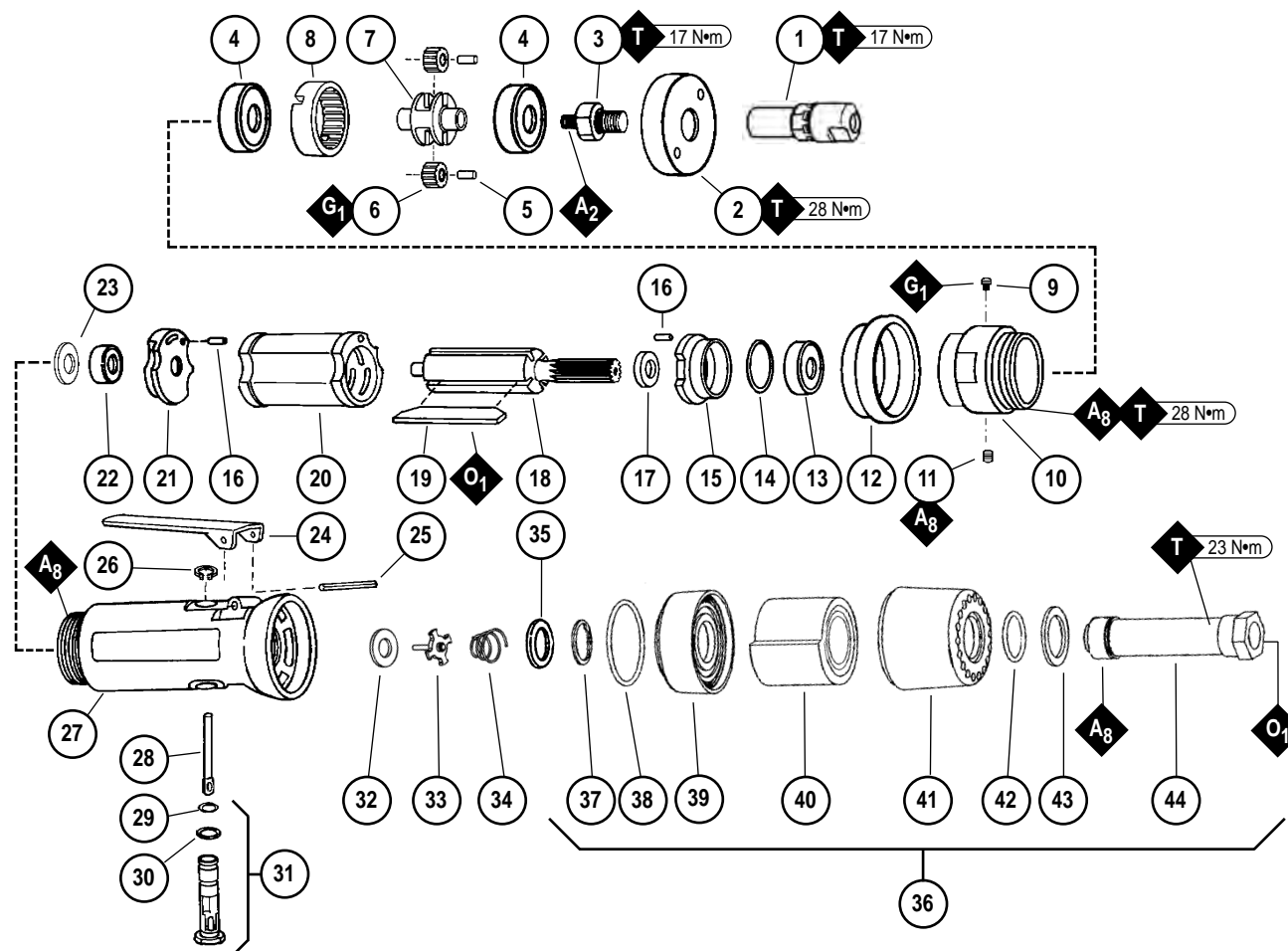


WARNING Always operate, inspect and maintain this tool in accordance with the Safety Code for portable air tools (ANSI B186.1) and any other applicable safety codes and regulations. Please refer to Dynabrade's Warning/Safety Operating Instructions for more complete safety information. See inside for Important Operating, Maintenance and Safety Instructions.

Index Key

No. Part # Description

1	50010	1/4" Collet Assy.	23	02679	Shield
	50015	6mm Collet Assy.	24	01448	Throttle Lever
2	50781	Rear Exhaust Cover		01462	Safety Lock Lever
3	50782	Adapter	25	12132	Pin
4	54520	Bearing (2)	26	95558	Retaining Ring
5	54472	Gear Shaft (2)	27	02124	Housing - 51201
6	54519	3,200 RPM Gear (2)		02125	Housing - 51202
	06213	5,000 RPM Gear (2)		02126	Housing - 51204
7	Planetary Carrier			02127	Housing - 51205
	50786	3,200 RPM	28	01449	Valve Stem
	50787	5,000 RPM	29	95730	O-Ring
8	54468	Ring Gear	30	01024	O-Ring
9	01041	Grease Fitting	31	01469	Speed Regulator Assembly
10	53152	Gear Case	32	01464	Seal
11	50784	Lock Screw	33	01472	Tip Valve
12	01547	Rubber Collar	34	01468	Spring
13	02649	Bearing	35	01564	Air Control Ring
14	54529	Shim (3/pkg.)	36	94519	Muffler Assy.
15	01478	Front Bearing Plate	37	95711	Retaining Ring
16	50767	Pin (2)	38	95438	O-Ring
17	01479	Rotor Spacer	39	94521	Muffler Base
18	Rotor		40	94528	Felt Muffler
	54554	3,200 RPM	41	94522	Muffler Cap
	54553	5,000 RPM	42	95375	O-Ring
19	01480	Blades (4/pkg.)	43	94526	Spacer
20	01476	Cylinder	44	94523	Inlet Adapter
21	02676	Rear Bearing Plate			
22	02696	Bearing			



Important Operating, Maintenance and Safety Instructions

Carefully read all instructions before operating or servicing any Dynabrade® Abrasive Power Tool.

Warning: Hand, wrist and arm injury may result from repetitive work motion and overexposure to vibration.

Important: All Dynabrade rotary vane air tools must be used with a Filter-Regulator-Lubricator to maintain all warranties.

Operating Instructions:

Warning: Eye, face, respiratory, sound and body protection must be worn while operating power tools. Failure to do so may result in serious injury or death. Follow safety procedures posted in workplace.

1. With power source disconnected from tool, securely fasten abrasive/accessory on tool.
2. Install air fitting into inlet bushing of tool. **Important:** Secure inlet bushing of tool with a wrench before attempting to install the air fitting to avoid damaging valve body housing.
3. Connect power source to tool. Be careful not to depress throttle lever in the process.
4. Check tool speed with tachometer. If tool is operating at a higher speed than the RPM marked on the tool or operating improperly, the tool should be serviced to correct the cause before use.

Maintenance Instructions:

1. Check tool speed regularly with a tachometer. If tool is operating at a higher speed than the RPM marked on the tool, the tool should be serviced to correct the cause before use.
2. Some silencers on air tools may clog with use. Clean and replace as required.
3. All Dynabrade rotary vane air motors should be lubricated. Dynabrade recommends one drop of air lube per minute for each 10 SCFM (example: if the tool specifications state 40 SCFM, set the drip rate of your filter-lubricator at 4 drops per minute). Dynabrade Air Lube (P/N **95842**: 1 pt. 473 ml.) is recommended.
4. It is recommended that all Dynabrade rotary vane air tools be used with a Filter-Regulator-Lubricator to minimize the possibility of misuse due to unclean air, wet air or insufficient lubrication. Dynabrade recommends the following: **11405** Air Line Filter-Regulator-Lubricator — Provides accurate air pressure regulation, two-stage filtration of water contaminants and micro-mist lubrication of pneumatic components. Operates 40 SCFM @ 90 PSIG has 3/8" NPT female ports.
5. Lubricate Planetary Gears through the Gear Casing Grease Fitting with **2-3 plunges for every 50 hours of use, to achieve maximum gear life (order 95542 Grease and 95541 Gun)**.
6. Use only genuine Dynabrade replacement parts. To reorder replacement parts, specify the **Model #**, **Serial #** and **RPM** of your machine.
7. A Motor Tune-Up Kit (P/N **96173**) is available which includes assorted parts to help maintain motor in peak operating condition. Please refer to Dynabrade's Preventative Maintenance Schedule for a guide to expectant life of component parts.
8. Mineral spirits are recommended when cleaning the tool and parts. Do not clean tool or parts with any solvents or oils containing acids, esters, keytones, chlorinated hydrocarbons or nitro carbons.

Safety Instructions:

Products offered by Dynabrade should not be converted or otherwise altered from original design without expressed written consent from Dynabrade, Inc.



- **Important:** User of tool is responsible for following accepted safety codes such as those published by the American National Standards Institute (ANSI).
- Operate machine for one minute before application to workpiece to determine if machine is working properly and safely before work begins.
- Always disconnect power supply before changing abrasive/accessory or making machine adjustments.
- Inspect abrasives/accessories for damage or defects prior to installation on tools.
- Please refer to Dynabrade's Warning/Safety Operating Instructions Tag (Reorder No. **95903**) for more complete safety information.
- **Warning:** Hand, wrist and arm injury may result from repetitive work, motion and overexposure to vibration.

Notice

All Dynabrade motors use the highest quality parts and metals available and are machined to exacting tolerances. The failure of quality pneumatic motors can most often be traced to an unclean air supply or the lack of lubrication. Air pressure easily forces dirt or water contained in the air supply into motor bearings causing early failure. It often scores the cylinder walls and the rotor blades resulting in limited efficiency and power. Our warranty obligation is contingent upon proper use of our tools and cannot apply to equipment which has been subjected to misuse such as unclean air, wet air or a lack of lubrication during the use of this tool.

One Year Warranty

Following the reasonable assumption that any inherent defect which might prevail in a product will become apparent to the user within one year from the date of purchase, all equipment of our manufacture is warranted against defects in workmanship and materials under normal use and service. We shall repair or replace at our factory, any equipment or part thereof which shall, within one year after delivery to the original purchaser, indicate upon our examination to have been defective. Our obligation is contingent upon proper use of Dynabrade tools in accordance with factory recommendations, instructions and safety practices. It shall not apply to equipment which has been subject to misuse, negligence, accident or tampering in any way so as to affect its normal performance. Normally wearable parts such as bearings, contact wheels, rotor blades, etc., are not covered under this warranty.

Model Number	Motor HP (W)	Motor RPM	Sound Level	Maximum Air Flow CFM/SCFM (LPM)	Air Pressure PSIG (Bars)	Spindle Thread	Weight Pound (kg)	Length Inch (mm)	Height Inch (mm)
51201 / 51204	.4 (298)	3,200	81 dB(A)	3/23 (651)	90 (6.2)	3/8"-24 male	1.8 (.8)	9-1/8 (232)	1-5/8 (40)
51202 / 51205	.4 (298)	5,000	84 dB(A)	3/23 (651)	90 (6.2)	3/8"-24 male	1.8 (.8)	9-1/8 (232)	1-5/8 (40)

Additional Specifications: Air Inlet Thread 1/4" NPT • Hose Size 1/4" or 8mm

Disassembly/Assembly Instructions - .4 Hp/Straight-Line/Rear Exhaust

Important: Manufacturer's warranty is void if tool is disassembled before warranty expires.

Notice: Dynabrade strongly recommends the use of their **52296** Repair Collar (sold separately) during assembly/disassembly activities. Failure to use this collar will highly increase the risk of damage to the valve body of this tool. Please refer to parts breakdown for part identification.

Motor Disassembly:

1. Disconnect tool from power source.
2. Secure air tool in vise using **52296** Repair Collar. Remove collet assembly.
3. With an adjustable pin wrench or **50971** Lock Ring Tool, remove **50781** Rear Exhaust Cover by turning counter-clockwise.
4. Remove **50784** Lock Screw and pull **50782** Adapter and planetary carrier assembly from **53152** Gear Case.
5. Press planetary carrier assembly from rear **54520** Bearing. Remove ring gear and gears from **50786** or **50787** Planetary Carrier.
6. Secure planetary carrier in vise and remove **50782** Adapter. Press carrier from front **54520** Bearing.
7. Grab onto pinion and pull motor assembly from motor housing.
8. Press **54553** or **54554** Rotor from **02696** Rear Bearing. Press **02696** Rear Bearing from rear bearing plate, remove **02679** Shield.
9. Remove cylinder and rotor blades from rotor.
10. Press rotor through **02649** Front Bearing and **01478** Front Bearing Plate.

Motor Disassembly Complete.

Valve Body Disassembly:

1. Position valve body in vise using **52296** Repair Collar with air inlet facing up.
2. Remove air fitting by securing **94523** Inlet Adapter with a wrench and twist air fitting from inlet adapter.
Important: **94523** Inlet Adapter must be secured before attempting to remove air fitting to avoid damaging valve body housing.
3. Remove **94523** Inlet Adapter.
4. Remove **95711** Retaining Ring from inlet adapter and separate **94521** Muffler Base from **94522** Muffler Cap. Remove felt muffler.
5. Remove **01564** Air Control Ring from valve body. Using needle nose pliers, remove **01468** Spring, **01472** Tip Valve and **01464** Seal.
6. Using a 2.5mm drift pin, tap **12132** Pin from housing and remove throttle lever.
7. Remove **95558** Retaining Ring. Push **01469** Regulator from valve body and remove o-rings.

Disassembly Complete.

Motor Assembly:

Important: Be sure parts are clean and in good repair before assembling. Follow all grease, oil, and torque specifications.

1. Slip **01479** Spacer onto **54553** or **54554** Rotor.
2. Place a .002" Shim into **01478** Front Bearing plate as an initial spacing. Then slip **02649** Bearing into **01478** Front Bearing Plate. Press assembly onto rotor.
3. Check the clearance between rotor and bearing plate by using a .001" feeler gauge. Clearance should be at .001" to .0015". Adjust clearance by repeating steps 1-3 changing shims as required.
4. Once proper rotor gap clearance is achieved, install lubricated blades into rotor slots, (use **95842** Dynabrade Air Motor Oil or equivalent).
5. Install **01476** Cylinder so it rests against the **01478** Front Bearing Plate, (make sure inlet holes of cylinder line up with inlet holes in **02676** Rear Bearing Plate).
6. Press **02696** Bearing into **02676** Rear Bearing Plate. Press this assembly onto rotor. **Important:** Fit must be snug between bearing plates and cylinder. If too tight, rotor will not turn freely. Rotor must then be lightly tapped at press end so it will turn freely while still maintaining a snug fit. A loose fit will not achieve the proper preload or motor bearings. Next, place a small amount of grease on the **02696** Bearing and stick **02679** Shield against the bearing.
7. Secure housing in vise using **52296** Repair Collar or padded jaws so that motor cavity points upward.
8. Install motor assembly into housing, making sure motor drops all the way into housing.
Note: Align the rear bearing plate node with the notch inside the housing.
9. Slip **01547** Insulator Collar over **53152** Gear Case.
10. Apply Loctite® #567 to threads, and screw **53152** Gear Case onto motor housing. Torque to 28 N•m/250 in. lbs.
11. Press front **54520** Bearing onto front end of **50786** or **50787** Planetary Carrier.
12. Hold planetary carrier in a soft jaw vise and apply one drop of #271 Loctite® to the threads of **50782** Adapter. Install adapter onto planetary carrier. Torque to 17 N•m/150 in. lbs.
13. Install planetary gears and **54472** Gear Shafts onto planetary housing.
14. Slip **54468** Ring Gear over gears making sure that notches in ring gear will align with lock screw and grease fitting in **53152** Gear Case once planetary gear assembly is installed.
15. Press rear **54520** Bearing onto **50786** or **50787** Planetary Carrier, until the outer race of the bearing touches the ring gear.
16. Slip the complete planetary gear assembly into **53152** Gear Case and install **50784** Lock Screw.
17. Install **50781** Rear Exhaust Cover onto **53152** Gear Case. Torque to 28 N•m/250 in. lbs.
18. Lubricate planetary gears through **53152** Gear Case Grease Fitting with two plunges every 50 hours of use for maximum gear life.
19. Install collet assembly.

Motor Assembly Complete.

(continued on next page)

Disassembly/Assembly Instructions (continued)

Valve Body Assembly:

1. Insert **01469** Regulator with o-rings and valve stem in place into valve body. Secure with **95558** Retaining Ring.
2. Secure valve body in vise using **52296** Repair Collar with air inlet facing upwards. Insert **01464** Seal.
3. Line up hole in valve stem with hole in housing (looking past brass bushing). Insert **01472** Tip Valve so that the metal pin passes through the hole in the valve stem. Install **01468** Spring (small end towards tip valve).
4. Place felt muffler in **94522** Muffler Cap. Install **94521** Muffler Base onto muffler cap.
5. Install **95438** O-Ring into groove on muffler base. Place **95375** O-Ring and **94526** Spacer into recessed area of muffler cap.
6. Slip **94523** Inlet Adapter through muffler assembly and install **95711** Retainer Ring into groove on inlet adapter.
7. Install **01564** Air Control Ring into valve body housing.
8. Apply Loctite® #567 PST Pipe Sealant to threads of **94523** Inlet Adapter and install entire muffler assembly onto valve body. Torque 23 N•m/200 in. - lbs.
9. Replace air fitting. Secure inlet adapter with a wrench before tightening air fitting.
10. Install throttle lever and **12132** Pin.

Tool Assembly Complete. Please allow 30 minutes for adhesives to cure before operating tool.

Important: Motor should now be tested for proper operation at 90 PSIG. If motor does not operate properly or operates at a higher RPM than marked on the tool, the tool should be serviced to correct the cause before use. Before operating, place 2-3 drops of Dynabrade Air Lube (P/N **95842**) directly into air inlet with throttle lever depressed. Operate tool for 30 seconds to determine if tool is operating properly and to allow lubricating oils to properly penetrate motor.

Loctite® is a registered trademark of Loctite Corp.

Optional Accessories



Dynaswivel®

- Swivels 360° AT TWO PIVOT POINTS allowing the air hose to drop directly to the floor while providing superb tool handling.
- New **94300** 1/4" NPT, non-marring composite construction.



96173 Motor Tune-Up Kit

- Includes assorted parts to help maintain and repair motor.

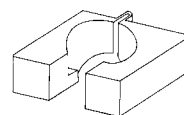


Grease

- Multi-purpose grease for all types of bearings, cams, gears.
- High film strength; excellent resistance to water, steam, etc.
- Workable range 0° F to 300° F

95541: Push-Type Grease Gun (one-handed operation).

95542: 10 oz. (283.5 g) tube.



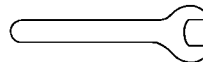
52296 Repair Collar

- Specially designed collar for use in vise to prevent damage to valve body housing during disassembly/assembly.



50971 Lock Ring Tool

- Lock Ring Tool has a 3/8 in. square socket for use with 3/8 in. drive; breaker bar, ratchet head, or torque wrenches.



Open-End Wrenches

95262 – 14mm open-end.

95281 – 19mm open-end.