

VirtuScaler Webscaler®

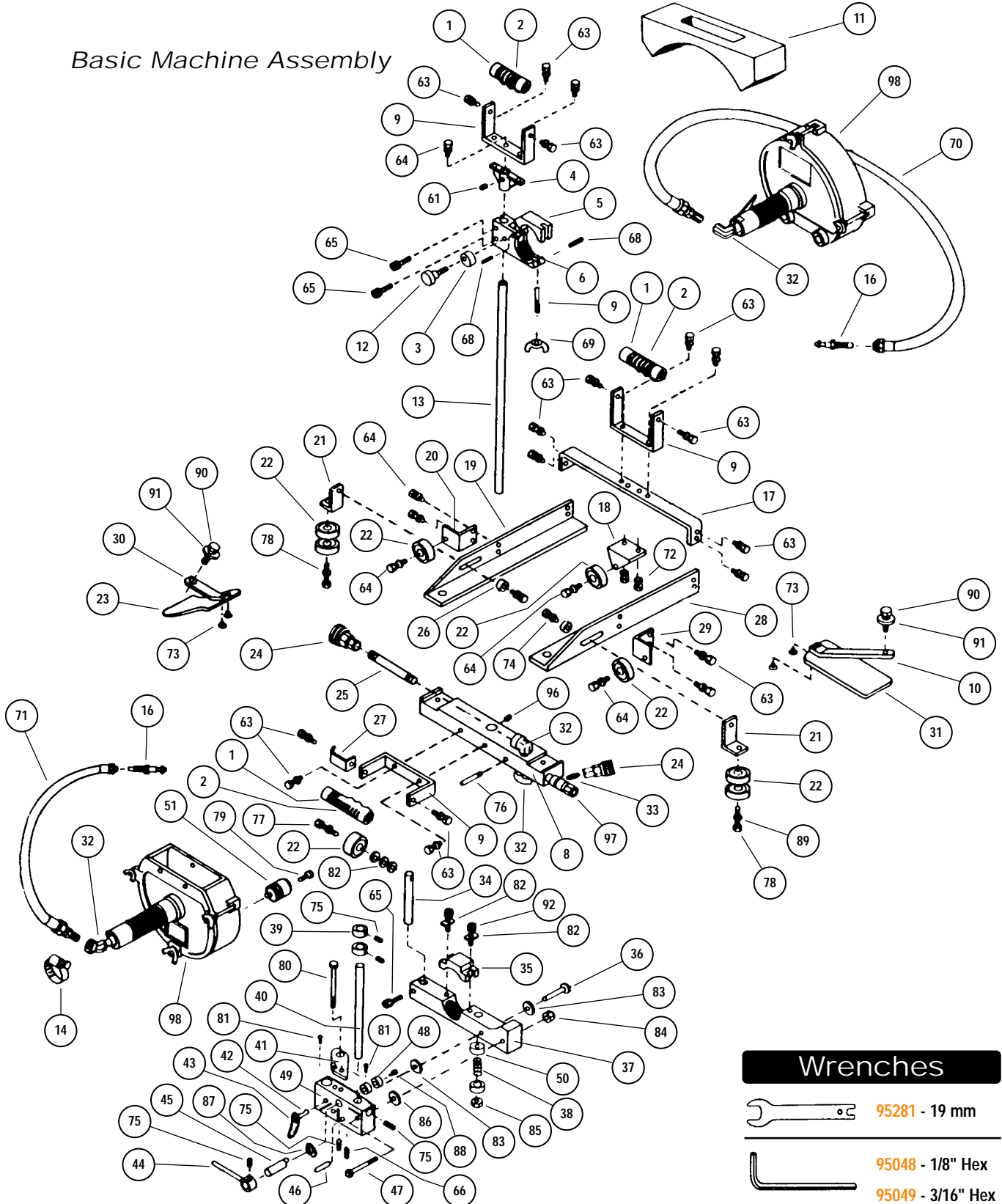
Models:
30200 — 2,100 RPM

Air Motor and Machine Parts

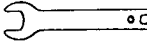




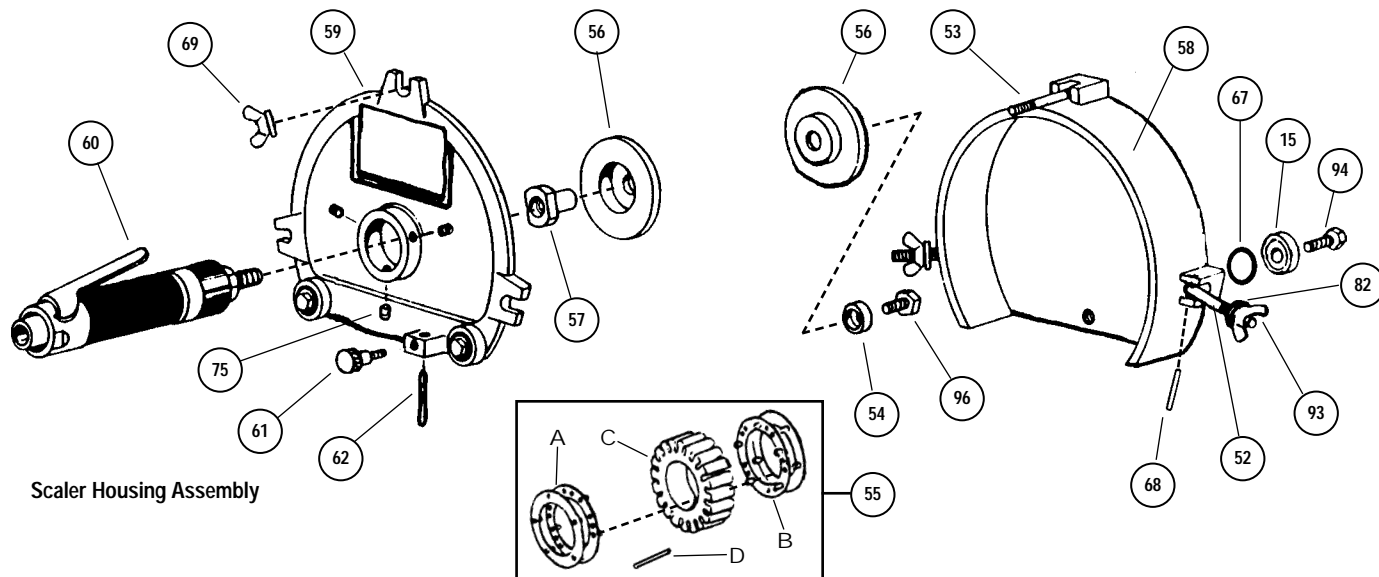
WARNING Always operate, inspect and maintain this tool in accordance with the Safety Code for portable air tools (ANSI B186.1) and any other applicable safety codes and regulations. Please refer to Dynabrade's Warning/Safety Operating Instructions for more complete safety information.

Basic Machine Assembly



Wrenches

-  **95281** - 19 mm
-  **95048** - 1/8" Hex
-  **95049** - 3/16" Hex



Scaler Housing Assembly

Index Key			
No.	Part	Description	
1	31102	Top Handle Rod	35 30232 Lower Motor Mount Clamp
2	95169	Handle Grip	36 30227 Thrust Rod
3	30224	Trigger Cam	37 30204 Lower Motor Mount Body
4	30235	Post Handle Mount	38 30211 Tension Spring
5	30233	Top Motor Body Clamp	39 95184 "Boston" Collar
6	30203	Top Motor Mount Bracket	40 30222 Lower Motor Guide Post
7	30234	Top Motor Mount Toggle	41 30212 Tension Support Bracket
8	30201	Main Body Bar	42 30241 Shaft Lock
9	31101	Top "U"-Handle Bracket	43 97743 Adjustment Lever
10	30221	Top Rubber Support Bracket	44 30215 Disengage Lever
11	95189	Lead Weight (17 lbs.)	45 30209 Cam Shaft
12	95218	Tracking Knob with 95268 Washer	46 95187 Urethane Stop
13	30202	Main Post	47 30231 Pivot Bolt
14	95161	Hanson Hose Clamp	48 11016 Roller Bearing
15	30005	Roller Bearing (3)	49 30205 Lower Post Lock
16	95091	Hanson Plug	50 30226 Spring Cup Washer
17	30207	Tie Bar	51 97771 Floor Rest
18	30208	Center Wheel Mount	52 30254 Toggle Bolt
19	30206	"L"-Frame Angle Left	53 30253 Stud
20	30238	Left Wheel Support Bracket	54 30260 Recess Washer
21	30217	Edge Guide Bracket	55 39010 Wheel Assembly
22	95057	Steel Roller Wheel	A 39011A Spacer Ring
23	30220	Bottom Rubber Guard	B 39011B Spacer Ring
24	95092	Quick Couple	C 39012 1" Hub
25	95079	Nipple	D 33044 1" Keeper Pin (20)
26	30223	Edge Guide Washer	56 30259 Wheel Flange
27	30214	Hose Retainer	57 30258 Shaft Arbor
28	30236	"L"-Frame Angle Right	58 30251 Wheel Guard
29	30216	Right wheel Support Bracket	59 30252 Guard Cover
30	30237	Rubber Support Bracket	60 04206 Air Motor
31	30219	Top Rubber Guard	61 30007 Adjustment Knob
32	95057	90° Street Elbow	62 30006 Guide Pin
33	95078	Close Nipple	63 95172 Hex Bolt
34	30210	Guide Wheel Support	64 95179 Hex Bolt
			65 95157 Cap Screw
			66 95000 Cup Point Set Screw
			67 95175 Flat Washer
			68 95171 Long Roll Pin
			69 95174 Wing Nut
			70 95771 40" Hose
			71 95770 15" Hose
			72 95206 Hex Bolt
			73 95235 Button Head Cap Screw
			74 95158 Hex Head Cap Screw
			75 95224 Set Screw
			76 95769 Stop Pin
			77 95023 Hex Bolt
			78 95024 Hex Bolt
			79 95536 Cap Screw
			80 95026 Hex Bolt
			81 95207 Button Head Screw
			82 95166 Flat Washer
			83 95191 Plastic Washer
			84 95188 Lock Nut
			85 95186 Hex Nut
			86 30230 Plastic Washer
			87 30225 Silicone Washer
			88 95168 Cap Screw
			89 95167 Washer (On All 1/4" Hex Bolts)
			90 95036 Hex Bolt
			91 95042 Lock Washer
			92 95029 Cap Screw
			93 95170 Wing Nut
			94 95172 Hex Bolt
			95 95177 Cup Point Screw
			96 95173 Shaft Bolt
			97 32004 Slide Valve
			98 See above for Scaler Housing Assembly brake down.

Visit Our Web Site: www.dynabrade.com

Email: Customer.Service@Dynabrade.com



DYNABRADE, INC., 8989 Sheridan Drive • Clarence, NY 14031-1490 • Phone: (716) 631-0100 • Fax: 716-631-2073 • International Fax: 716-631-2524
 DYNABRADE EUROPE S.à.r.l., Zone Artisanale • L-5485 Wormeldange—Haut, Luxembourg • Telephone: 352 76 84 94 1 • Fax: 352 76 84 95 1

©DYNABRADE, INC., 2000

PRINTED IN USA

04206 Air Motor

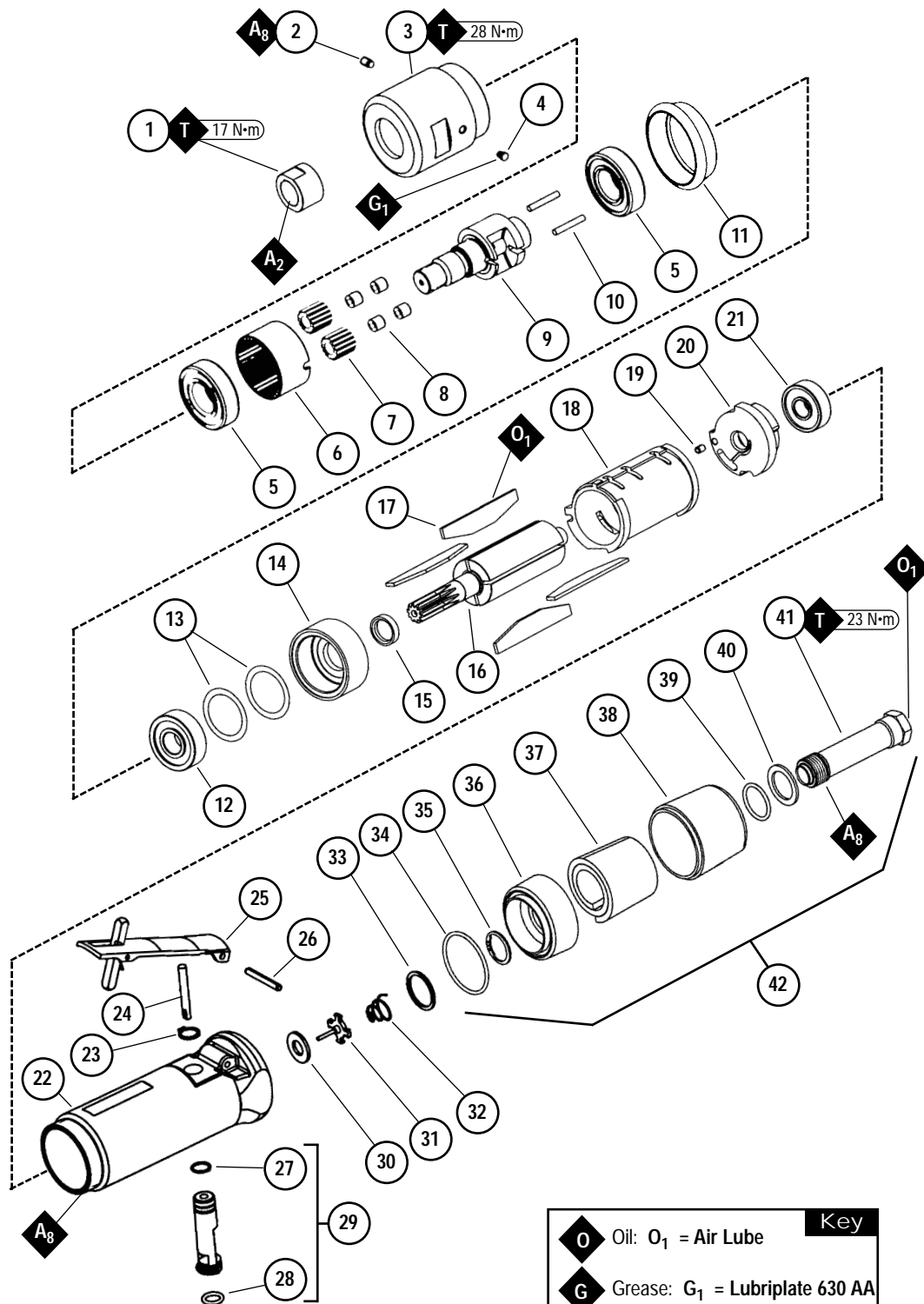
Air Motor and Machine Parts

WARNING

Always operate, inspect and maintain this tool in accordance with the Safety Code for portable air tools (ANSI B186.1) and any other applicable safety codes and regulations. Please refer to Dynabrade's Warning/Safety Operating Instructions for more complete safety information.

Index Key

No.	Part #	Description
1	04032	Spindle Nut
2	04014	Lock Screw
3	53186	Planetary Housing
4	01041	Grease Fitting
5	02552	Bearing (2)
6	53191	Ring Gear
7	53193	Gear (2)
8	04026	Bearing (4)
9	53165	Planetary Carrier
10	53182	Gear Shaft (2)
11	53175	Rubber Collar
12	01007	Bearing
13	01121	Shim (3/pkg.)
14	53183	Front Bearing Plate
15	01010	Motor Spacer
16	04017	Rotor
17	01185	Blades (4/pkg.)
18	01028	Cylinder
19	50767	Pin
20	01721	Rear End Plate
21	02649	Bearing
22	01295	Housing
23	95558	Retaining Ring
24	01477	Valve Stem
25	01089	Throttle Lever
26	01017	Pin
27	95730	O-Ring
28	01024	O-Ring
29	01247	Speed Reg. Assy.
30	01464	Seal
31	01472	Tip Valve
32	01468	Spring
33	01564	Air Control Ring
34	95438	O-Ring
35	95711	Retaining Ring
36	94521	Muffler Base
37	94528	Felt Muffler
38	94522	Muffler Cap
39	95375	O-Ring
40	94526	Spacer
41	94523	Inlet Adapter
42	94519	Muffler Assembly



Key	
O	Oil: O ₁ = Air Lube
G	Grease: G ₁ = Lubriplate 630 AA
A	Adhesive: A ₂ = Loctite #271 A ₈ = Loctite #567
T	Torque: N·m x 8.85 = In. - lbs.

Important Operating, Maintenance and Safety Instructions

Carefully read all instructions before operating or servicing any Dynabrade® Abrasive Power Tool.

Warning: Hand, wrist and arm injury may result from repetitive work motion and overexposure to vibration.

Important: All Dynabrade air tools must be used with a Filter-Regulator-Lubricator to maintain all warranties.

Operating Instructions:

Warning: Eye, face, respiratory, sound, and body protection must be worn while operating power tools. Failure to do so may result in serious injury or death. Follow safety procedures posted in workplace.

1. With power source disconnected from tool, securely fasten abrasive/accessory on tool.
2. Install air fitting into inlet bushing of tool. **Important:** Secure inlet bushing of tool with a wrench before attempting to install the air fitting to avoid damaging valve body housing.
3. Connect power source to tool. Be careful **not** to depress throttle lever in the process.
4. Check tool speed with tachometer. If tool is operating at a higher speed than the RPM marked on the tool or operating improperly, the tool should be serviced to correct the cause before use.

Maintenance Instructions:

1. Check tool speed regularly with a tachometer. If tool is operating at a higher speed than the RPM marked on the tool, the tool should be serviced to correct the cause before use.
2. Some silencers on air tools may clog with use. Clean and replace as required.
3. All Dynabrade air motors should be lubricated. Dynabrade recommends one drop of air lube per minute for each 10 SCFM (example: if the tool specifications state 40 SCFM, set the drip rate of your filter-lubricator at 4 drops per minute). Dynabrade Air Lube (P/N 95842: 1pt. 473ml.) is recommended.
4. An air line filter-regulator-lubricator must be used with this air tool to maintain all warranties. Dynabrade recommends the following: 11289 Air Line Filter-Regulator-Lubricator — Provides accurate air pressure regulation, two-stage filtration of water contaminants and micro-mist lubrication of pneumatic components. Operates 40 SCFM @ 100 PSI has 3/8" NPT female ports.
5. Use only genuine Dynabrade replacement parts. To reorder replacement parts, please specify the **Model #**, **Serial #** and **RPM** of your machine.
6. A Motor Tune-Up Kit (P/N 96260) is available which includes assorted parts to help maintain motor in peak operating condition.
7. Mineral spirits are recommended when cleaning the tool and parts. Do not clean tool or parts with any solvents or oils containing acids, esters, ketones, chlorinated hydrocarbons or nitro carbons.

Safety Instructions:

Products offered by Dynabrade should not be converted or otherwise altered from original design without expressed written consent from Dynabrade, Inc.



- **Important:** User of tool is responsible for following accepted safety codes such as those published by the American National Standards Institute (ANSI).
- Operate machine for one minute before application to workpiece to determine if machine is working properly and safely before work begins.
- Always disconnect power supply before changing abrasive/accessory or making machine adjustments.
- Inspect abrasives/accessories for damage or defects prior to installation on tools.
- Please refer to Dynabrade's Warning/Safety Operating Instructions Tag (Reorder No. 95903) for more complete safety information.
- **Warning:** Hand, wrist and arm injury may result from repetitive work, motion and overexposure to vibration.

Notice

All Dynabrade motors use the highest quality parts and metals available and are machined to exacting tolerances. The failure of quality pneumatic motors can most often be traced to an unclean air supply or the lack of lubrication. Air pressure easily forces dirt or water contained in the air supply into motor bearings causing early failure. It often scores the cylinder walls and the rotor blades resulting in limited efficiency and power. Our warranty obligation is contingent upon proper use of our tools and cannot apply to equipment which has been subjected to misuse such as unclean air, wet air or a lack of lubrication during the use of this tool.

One Year Warranty

Following the reasonable assumption that any inherent defect which might prevail in a product will become apparent to the user within one year from the date of purchase, all equipment of our manufacture is warranted against defects in workmanship and materials under normal use and service. We shall repair or replace at our factory, any equipment or part thereof which shall, within one year after delivery to the original purchaser, indicate upon our examination to have been defective. Our obligation is contingent upon proper use of Dynabrade tools in accordance with factory recommendations, instructions and safety practices. It shall not apply to equipment which has been subject to misuse, negligence, accident or tampering in any way so as to affect its normal performance. Normally wearable parts such as bearings, contact wheels, rotor blades, etc., are not covered under this warranty.

Model Number	Motor HP (W)	Abrasive Capacity Inch (mm)	Sound Level	RPM (Loaded)	Air Flow Rate SCFM (LPM)	Spindle Thread	Weight Pound (kg)	Length Inch (mm)	Air Pressure PSI (Bars)
30200	.7 (522)	1 (26)W	94 dBA	2,100	38 (1,076)	1/2"-20 male	33.2 (15)	14 (355)	90 (6.2)

Additional Specifications: Height 10-3/4" (273 mm) • Air Inlet Thread 3/8" (9 mm) NPT • Hose I.D. Size 1/2" (13 mm)

Assembly/Disassembly Instructions-Webscaler

Important: Manufacturer's warranty is void if tool is disassembled before warranty expires.

Please refer to parts breakdown for part identification.

The angle of both the top and bottom heads have been present at the factory and no new adjustment should be necessary. The height of the top head is also present at the factory.

- The height of the top head is adjustable if such adjustment is necessary other than the factory presents.
- The height of the bottom head is adjustable to compensate for the thickness of the workpiece.

To adjust the height of the top head, proceed with following:

1. Disconnect main air supply.
2. Remove wheel guard to give full view of Roto-Peen wheel.
3. Loosen two (2) socket head screw (P/N 95157) at the back of the top machine mounting bracket.
4. Adjust height of top machine to be 3-3/8" from the center of the wheel assembly to the workpiece.
5. Tighten screws.
6. Replace wheel guard.

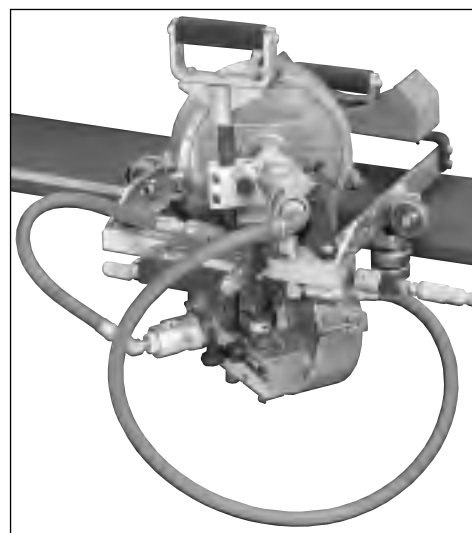
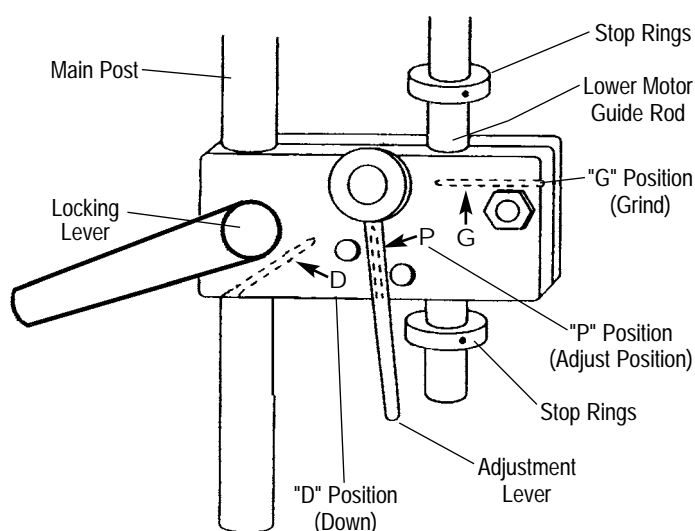
To adjust the height of the bottom head, refer to figure A and proceed with the following.

1. Disconnect main air supply. Set the lower post block to "P" position.
2. Remove wheel guard to give full view of Roto-Peen wheel.
3. Locate lower guide wheel. Loosen socket head screw (P/N 95157) on the lower guide wheel bracket.
4. Loosen locking lever and lower stop ring.
5. Adjust height of bottom machine to be 3-3/8" from the center of the wheel assembly to the workpiece. Tighten locking lever.
6. Slide lower guide wheel bracket up so that wheel just "touches" the workpiece. Tighten the socket head screw.
7. After making guide wheel adjustment, recheck 3-3/8" height from the center of wheel assembly to the workpiece.

Note: The lower post block should be in the "G" position during grinding operations.

Note: To remove machine from workpiece after height has been set, move adjustment lever to "D" position.

Figure A - Lower Post Block



Operating Instructions:

Operate at 90 PSI line pressure for optimum action and wheel life. **FOR BEST WHEEL LIFE DO NOT EXCEED 2100 RPM UNDER LOAD.** Since air line size and pressure vary, check RPM under load with a tachometer prior to use. Speed control is maintained by adjusting the regulator screw recessed in the motor housing. Never operate tool without guard housing and cover encasing the Rotor-Peen flap wheel. Always operate with eye, hearing and face protection. (Full face shield and muff-type hearing protection is recommended.) Personnel must never come in contact with the flap wheel unless all power has been disconnected from the tool.

Important: For maximum flap-life, the heads should be 3-3/8" from the center of the spindle to the work surface. This is preset at the factory but should be checked periodically when the machine is in use.

Optional Accessories



96260 Motor Tune-Up Kit:

Includes assorted parts to help maintain and repair motor.