

**AUTOMOTIVE**

Parts Page Reorder No. APD99•05
Effective January, 1999

Mini-Ratchet

Model:

18030 – 1/4"

18031 – 3/8"

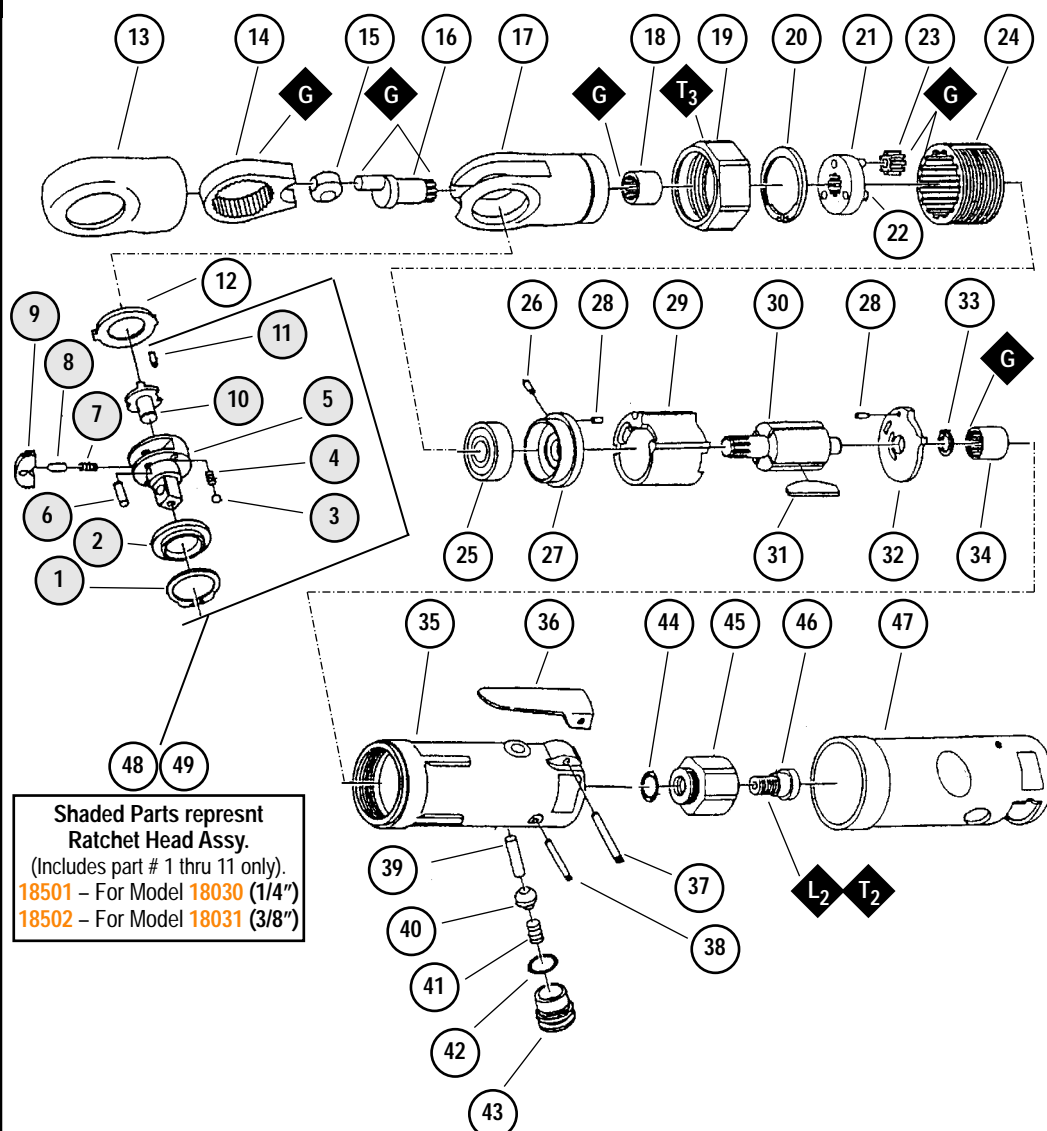
Air Motor and Machine Parts.

! WARNING

Always operate, inspect and maintain this tool in accordance with the Safety Code for portable air tools (ANSI B186.1) and any other applicable safety codes and regulations. Please refer to Dynabrade's Warning/Safety Operating Instructions for more complete safety information.

Index Key

No.	Part	Description
1	18469	Retaining Ring
2	18467	Thrust Washer - 1/4"
	18467	Thrust Washer - 3/8"
3	18466	Steel Ball
4	18465	Thrust Washer Spring
5	18463	1/4" Square Anvil
	18464	3/8" Square Anvil
6	18462	Dowel Pin
7	18461	Reverse Spring
8	18460	Reverse Pin
9	18459	Ratchet Pawl
10	18457	Reverse Lever - 1/4"
	18457	Reverse Lever - 3/8"
11	18456	Roll Pin
12	18455	Wear Washer
13	18451	Mini-Boot
14	18452	Yoke
15	18453	Drive Bushing
16	18454	Crank Shaft
17	18470	Ratchet Housing
18	18471	Needle Bearing
19	18472	Lock Ring
20	18473	Retaining Ring
21	18474	Planet Cage (incl. pins)
22	18475	Planet Pin
23	18476	Planet Gear
24	18477	Internal Gear
25	18478	Bearing
26	18479	Roll Pin
27	18480	Front Plate
28	18481	Roll Pin
29	18482	Cylinder
30	18483	Rotor
31	18484	Blade (4/pkg.)
32	18485	Rear Plate
33	18486	Retaining Ring
34	18471	Needle Bearing
35	18488	Motor Housing
36	18496	Throttle Lever
37	18495	Roll Pin
38	18494	Roll Pin
39	18493	Valve Pin
40	18492	Valve
41	18491	Valve Spring
42	18490	O-Ring
43	18489	Air Regulator
44	18497	O-Ring
45	18498	Inlet Bushing
46	18499	Retaining Screw
47	18500	Housing Cover
48	18501	Ratchet Head Assy. 1/4"
49	18502	Ratchet Head Assy. 3/8"

**Shaded Parts represent Ratchet Head Assy.**

(Includes part # 1 thru 11 only).

18501 – For Model 18030 (1/4")

18502 – For Model 18031 (3/8")

KEY

Oil



Grease

Loctite/Hernon: L₂ = Hernon #940

Torque: N•m x 8.85 = In. - lbs.

T₂ = 17 N•m, T₃ = 23 N•m

See reverse side for Accessories and Important Operating, Maintenance and Safety Instructions.

Autobrade Red Important Operating, Maintenance and Safety Instructions

Carefully read all instructions before operating or servicing any Dynabrade® Abrasive Power Tool.

Warning: Hand, wrist and arm injury may result from repetitive work motion and overexposure to vibration.

Important: All Dynabrade air tools must be used with a Filter-Regulator-Lubricator to maintain all warranties.

Operating Instructions:

Warning: Eye, face and body protection must be worn while operating power tools. Failure to do so may result in serious injury or death. Follow safety procedures posted in workplace.

1. With power source disconnected from tool, securely fasten abrasive/accessory on tool.
2. Install air fitting into inlet bushing of tool. **Important:** Secure inlet bushing of tool with a wrench before attempting to install the air fitting to avoid damaging valve body housing.
3. Connect power source to tool. Be careful not to depress throttle lever in the process.
4. Check tool speed with tachometer. If tool is operating at a higher speed than the RPM marked on the tool or operating improperly, the tool should be serviced to correct the cause before use.

Maintenance Instructions:

1. Check tool speed regularly with a tachometer. If tool is operating at a higher speed than the RPM marked on the tool, the tool should be serviced to correct the cause before use.
2. Some silencers on air tools may clog with use. Clean and replace as required.
3. All Dynabrade air motors should be lubricated. Dynabrade recommends one drop of air lube per minute for each 10 SCFM (example : if the tool specification state 40 SCFM, set the drip rate of your filter-lubricator at 4 drops per minute). Dynabrade Air Lube (P/N **95842**: 1pt. 473ml.) is recommended.
4. An air line filter-regulator-lubricator must be used with this air tool to maintain all warranties. Dynabrade recommends the following: **11411** Air Line Filter-Regulator-Lubricator — Provides accurate air pressure regulation, two-stage filtration of water contaminants and micro-mist lubrication of pneumatic components. Operates 28 CFM @ 90 PSI has 3/8" NPT female ports.
5. Use only genuine Dynabrade replacement parts. To reorder replacement parts, specify the **Model #**, **Serial #**, and **RPM** of your machine.
6. Mineral spirits are recommended when cleaning the tool and parts. Do not clean tool or parts with any solvents or oils containing acids, esters, keytones, chlorinated hydrocarbons or nitro carbons.

Safety Instructions:

Products offered by Dynabrade should not be converted or otherwise altered from original design without expressed written consent from Dynabrade, Inc.

- **Important:** User of tool is responsible for following accepted safety codes such as those published by the American National Standards Institute (ANSI).
- Operate machine for one minute before application to workpiece to determine if machine is working properly and safely before work begins.
- Always disconnect power supply before changing abrasive/accessory or making machine adjustments.
- Inspect abrasives/accessories for damage or defects prior to installation on tools.
- Please refer to Dynabrade's Warning/Safety Operating Instructions Tag (Reorder No. **95903**) for more complete safety information.
- **Warning:** Hand, wrist and arm injury may result from repetitive work, motion and overexposure to vibration.

Autobrade Red Tool Warranty

Following the reasonable assumption that any inherent defect which might prevail in a product will become apparent to the user within **6 months** from the date of purchase, "Autobrade Red" tools are warranted against defects in workmanship and materials under normal use and service.

We shall, at our option, repair or replace at our factory, any "Autobrade Red" tool which shall, within 6 months after delivery to the original purchaser, indicate upon our examination to have been defective.

Our obligation is contingent upon proper use of "Autobrade Red" tools in accordance with factory recommendations, instructions and practices.

The warranty shall not apply in these cases:

1. Normally wearable parts such as bearings, rotor blades, etc.
2. Consumables such as sanding pads, etc.
3. Misuse, neglect in maintaining tool or tool modification.
4. Lack of lubrication or evidence of rust, dirt or corrosion.
5. Tools requiring normal tune-up or cleaning.
6. Tools being used after they are badly worn such as using ratchet with worn yoke.
7. Ratchets anvils damaged by excessive hand torquing.
8. Use in production-type applications.

Products, to be considered for warranty, must be sent back to our factory, transportation prepaid by the user. Please send tool back to attention of "Repair Department" with note fully explaining the nature of the problem along with a copy of original invoice indicating model and serial number.

Return product to:

Dynabrade, Inc.

Attn: Repair Department

8989 Sheridan Dr.

Clarence, NY **14031**

Visit our new Web Site On-Line: <http://www.dynabrade.com>

