

**AUTOMOTIVE**

Parts Page Reorder No. APD04•02

Effective March, 2004

Supersedes APD03•01

DynaZip

Air Motor and Machine Parts

Models:**18255 - Basic Air Tool** (w/Wire Wheel)**18256 - Air Tool Kit** (w/Wire & Eraser Wheels)**18257 - Deluxe Kit****18258 - Eraser Decal Removal Tool** (w/Eraser Wheel)

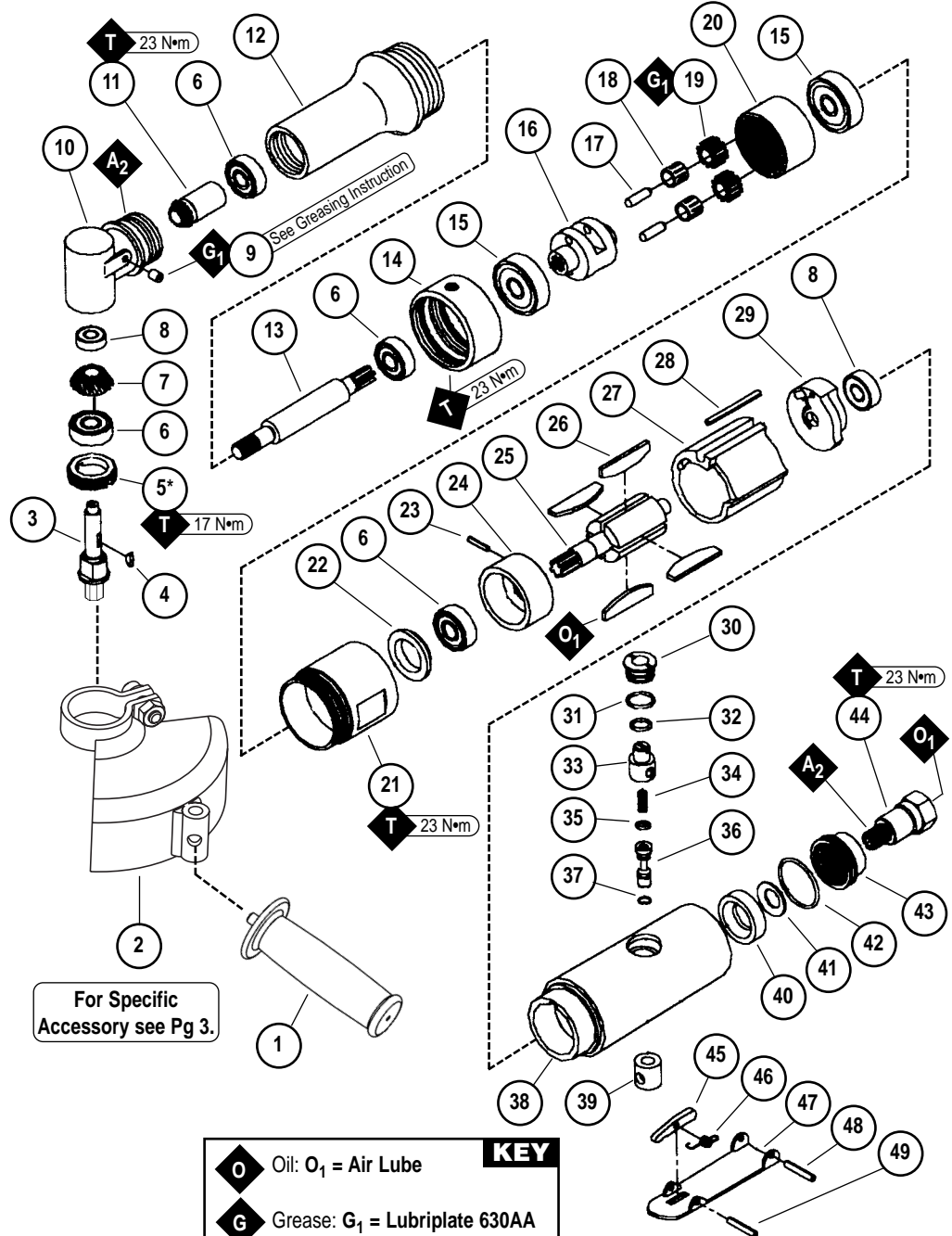
⚠ WARNING

Always operate, inspect and maintain this tool in accordance with the Safety Code for portable air tools (ANSI B186.1) and any other applicable safety codes and regulations. Please refer to Dynabrade's Warning/Safety Operating Instructions for more complete safety information.

Index Key

No. Part # Description

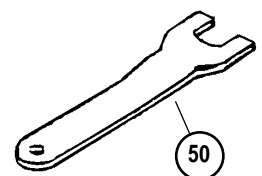
1	53163	Handle Assembly
2	18270	Guard
3	18269	Spindle
4	18443	Key
5*	18441	Clamp Nut
6	18428	Ball Bearing (4)
7	18267	Bevel Gear
8	18421	Ball Bearing (2)
9	18447	Grease Fitting
10	18747	Angle Head Housing
11	18268	Pinion
12	18745	Socket
13	18746	Transmission Shaft
14	18744	Coupling
15	18741	Ball Bearing (2)
16	18742	Gear Complete
17	18743	Pin (2)
18	18738	Needle Bearing (2)
19	18737	Pinion Gear (2)
20	18736	Annular Gear
21	18740	Housing Lock Ring
22	18438	Rubber Gasket
23	18436	Pin
24	18427	Front End Plate
25	18739	Rotor
26	18426	Rotor Blade (4/pkg.)
27	18424	Cylinder
28	18423	Cylinder Pin
29	18422	Rear End Plate
30	18420	Valve Screw
31	18419	O-Ring
32	18418	O-Ring
33	18417	Regulator
34	18416	Valve Spring
35	18415	O-Ring
36	18413	Valve Stem
37	18414	O-Ring
38	18400	Motor Housing
39	18412	Valve Bushing
40	18401	Silencer
41	18402	Washer
42	18403	O-Ring
43	18404	Deflector
44	18405	Air Inlet
45	18411	Stop Rod
46	18410	Safety Lever Spring
47	18408	Throttle Lever
48	18407	Lever Pin
49	18409	Spring Pin
50	18749	Spanner Wrench



O	Oil: O ₁ = Air Lube
G	Grease: G ₁ = Lubriplate 630AA
A	Adhesive: A ₂ = Loctite #271
T	Torque: N•m x 8.85 = In. - lbs.

*Left Hand Threads

See page 4 for Important Operating, Maintenance and Safety Instructions.



Lubricate the bevel gears through the grease fitting located in the 18747 Angle Head Assembly. Apply 2-3 plunges* for every 40 hours of use, to achieve maximum gear life.
(*order 95542 Grease and 95541 Gun)

DynaZip Wire Wheel Mounting, Care and Operation Instructions

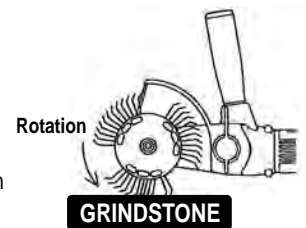
IMPORTANT: READ OPERATORS MANUAL IN ENTIRETY BEFORE USING THE DYNAZIP TOOL AND ACCESSORIES.

Wire Wheel Mounting Instructions:

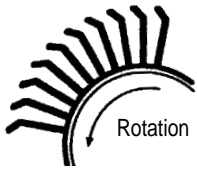
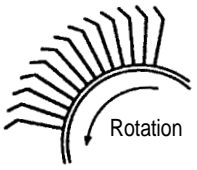
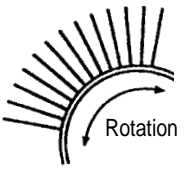
1. Disconnect the tool from the air supply.
2. Select the accessory and the zip hub to be mounted.
3. Install the hex socket side of the zip hub so that it fits onto the male hex portion of the 18269 Spindle.
4. Install the accessory. Orient the medium and coarse wire wheels so that the ends of the wires point in the direction of rotation. The fine wire wheels are bi-directional.
5. Install the second half of the zip hub.
6. Hold the 18269 Spindle stationary with the 18749 Spanner Wrench and install the star washer along with the socket head cap screw.

Sharpening of Wire Wheel

After using Wire Wheels for a certain period of time the tips of the bristles become round and the "brushing" effect is reduced. To recover the Wire Wheel performance on the Coarse or Medium brush, simply run the brushes in REVERSE DIRECTION on stone or concrete flooring for 10-20 seconds. To do this, **DISCONNECT TOOL FROM THE AIR SUPPLY**, then assemble the Wire Wheel upside down to provide reverse spinning to the brush. Reconnect the tool to air supply and spin the brush on the grinding stone applying light pressure. Then assemble the Wire Wheel in the correct spinning direction again. For Fine and straight brushes just REVERSE THE DIRECTION of the brush. No sharpening is necessary.



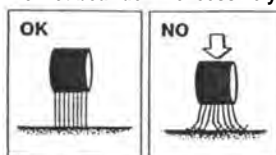
DynaZip Wire Wheel Descriptions and Recommendations:

 Coarse	 Medium	 Fine
Description:		
Green Belt (w/Bent Knee Bristles) <ul style="list-style-type: none"> 0.7mm diameter carbon spring steel with hardened tips, bent knee bristles. 	Blue Belt (w/Bent Knee Bristles) <ul style="list-style-type: none"> 0.53mm diameter carbon spring steel with hardened tips, bent knee bristles. 	Green Belt (w/Straight Bristles) <ul style="list-style-type: none"> 0.5mm diameter. Straight brush with hardened tips. Use bi-directionally.
Effect:		
<ul style="list-style-type: none"> Coarse sandblast effect. 	<ul style="list-style-type: none"> Fine sandblast effect. 	<ul style="list-style-type: none"> No sandblast effect.
Removal Applications:		
<ul style="list-style-type: none"> Seam Sealer Undercoating Urethane Stoneguard 	<ul style="list-style-type: none"> Heavy rust to pore depth Thick Paint 	<ul style="list-style-type: none"> Light Rust and Paint to pore depth

Wire Wheel Operation Tips

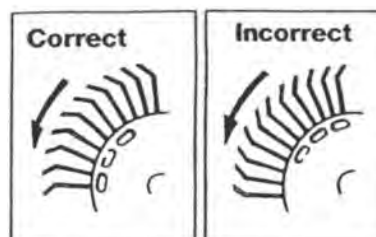
- Wire Wheels work efficiently with minimum force applied to the wheel.
- The Wire Wheel will be effected if too much pressure is used. Trying to compensate for decreased efficiency by applying more pressure will only result in bent, dull and lost needles.

Do Not bear down excessively

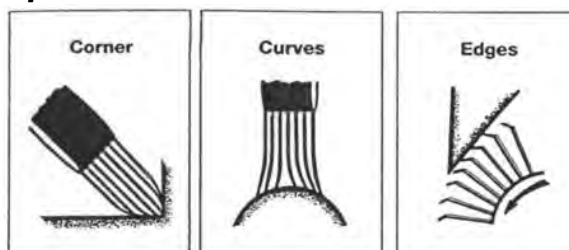


- If wheel is fatigued, resharpen the bristles using the method mentioned on next page. This will place bristles back into the proper position and give a sharp point to the bristles.

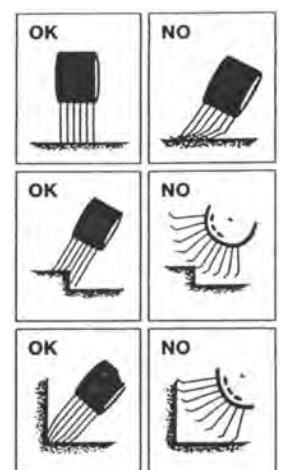
Active Rotation



Special Uses



Correct Working Positions



DynaZip Eraser Decal Removal Wheel Mounting and Care Instructions

Eraser Decal Removal Wheel Mounting Instructions:

1. Disconnect the tool from the air supply.
 2. Install the hex socket side of the Eraser Hub so that it fits onto the male hex portion of the 18269 Spindle.
 3. Install the 92250 Eraser Wheel and the second half of the Eraser Hub.
 4. Hold the 18269 Spindle stationary with the 18749 Spanner Wrench and install the star washer along with the socket head cap screw.
- Note:** The eraser fits loosely between the Eraser Hub halves.

Eraser Decal Removal Wheel: (Decal and Pinstripe Removal Wheel - Max RPM 3,500)

- The rubber Eraser Decal Removal Wheel is available to remove pinstriping, stickers, decals, adhesive tapes and glue from metal, glass, fiberglass and wood surfaces without damaging the sub-surface.

When using Eraser Decal Removal Wheel, work **INWARD** from the edge and from side to side.
Never tilt or move forward & backwards across a solid surface.

- The notched wheel vents and cools surface.
- No jumping, No vibration. Easy to handle.

92250 Eraser Wheel



92251 Eraser Wheel with Hub



DynaZip Air Tool Configurations

18255 Basic Air Tool



Model 18255

Includes:

- 92245 3/4" Wire Wheel (Coarse)
- 92253 3/4" Zip Hub

Replacement Zip Wire Wheel

Part No.	Size	Grade	Band	Tip Type
92245	4" dia. x 3/4" wide	Coarse	Green	Bent
92246	4" dia. x 3/4" wide	Medium	Blue	Bent
92247	4" dia. x 3/4" wide	Fine	Green	Straight
92248	4" dia. x 1/2" wide	Coarse	Blue	Bent
92249	4" dia. x 1/2" wide	Fine	Green	Straight

18256 Air Tool Kit



Model 18256

Includes:

- 92245 3/4" Wire Wheel (Coarse)
- 92248 1/2" Wire Wheel (Coarse)
- 92250 1/2" Eraser Wheel
- 92252 1/2" Zip Hub
- 92253 3/4" Zip Hub

18258 Eraser Decal Removal Tool



Model 18258

Includes:

- 92250 3/4" Eraser Wheel
- 92253 3/4" Zip Hub

Replacement Eraser Decal Removal Wheel



92250 Eraser Wheel



92251 Eraser Wheel with Hub

18257 Deluxe Kit



Model 18257

Includes:

- 92245 3/4" Wire Wheel (Coarse)
- 92246 3/4" Wire Wheel (Medium)
- 92247 3/4" Wire Wheel (Fine)
- 92248 1/2" Wire Wheel (Coarse)
- 92249 1/2" Wire Wheel (Fine)
- 92250 3/4" Eraser Wheel
- 92252 1/2" Zip Hub
- 92253 3/4" Zip Hub

Autobrade Red Important Operating, Maintenance and Safety Instructions

Carefully read all instructions before operating or servicing any Dynabrade® Abrasive Power Tool.

Warning: Hand, wrist and arm injury may result from repetitive work motion and overexposure to vibration.

Important: All Dynabrade rotary vane air tools must be used with a Filter-Regulator-Lubricator to maintain all warranties.

Operating Instructions:

Warning: Eye, face, respiratory, sound and body protection must be worn while operating power tools. Failure to do so may result in serious injury or death. Follow safety procedures posted in workplace.

1. With air supply disconnected from tool, securely fasten abrasive/accessory on tool.
2. Install air fitting into inlet bushing of tool. **Important:** Secure inlet bushing of tool with a wrench before attempting to install the air fitting to avoid damaging valve body housing.
3. Connect air supply to tool. Be careful not to depress throttle lever in the process.
4. Check tool speed with tachometer. If tool is operating at a higher speed than the RPM marked on the tool or operating improperly, the tool should be serviced to correct the cause before use.
5. Air tools are not intended for use in explosive atmospheres and are not insulated for contact with electrical power sources. Sanding/Grinding certain materials can create explosive dust. It is the employers responsibility to notify the user of acceptable dust levels. Sanding/Grinding can cause sparks which can cause fires or explosions. It is the users responsibility to make sure the work area is free of flammable materials.

Maintenance Instructions:

1. Check tool speed regularly with a tachometer. If tool is operating at a higher speed than the RPM marked on the tool, the tool should be serviced to correct the cause before use.
2. Some silencers on air tools may clog with use. Clean and replace as required.
3. All Dynabrade rotary vane style air motors should be lubricated. Dynabrade recommends one drop of air lube per minute for each 20 SCFM (example: if the tool specifications state 40 SCFM, set the drip rate of your filter-lubricator at 2 drops per minute). Dynabrade Air Lube (P/N **95842**: 1 pt. 473 ml.) is recommended.
4. It is strongly recommended that all Dynabrade rotary vane air tools be used with a Filter-Regulator-Lubricator to minimize the possibility of misuse due to unclean air, wet air or insufficient lubrication. Dynabrade recommends the following: **11405** Air Line Filter-Regulator-Lubricator — Provides accurate air pressure regulation, two-stage filtration of water contaminants and micro-mist lubrication of pneumatic components. Operates 40 SCFM @ 100 PSIG has 3/8" NPT female ports.
5. Use only genuine Dynabrade replacement parts. To reorder replacement parts, specify the **Model #**, **Serial #**, and **RPM** of your machine.
6. Mineral spirits are recommended when cleaning the tool and parts. Do not clean tool or parts with any solvents or oils containing acids, esters, ketones, chlorinated hydrocarbons or nitro carbons.
7. DO NOT clean or maintain air tools with chemicals that have a low flash point (example: WD-40®).
8. Lubricate the bevel gears through the grease fitting located in the **18747** Angle Head Assembly. **Apply 2-3 plunges* for every 40 hours of use, to achieve maximum gear life.** (*order **95542** Grease and **95541** Gun)

Safety Instructions:

Products offered by Dynabrade should not be converted or otherwise altered from original design without expressed written consent from Dynabrade, Inc.



- **Important:** User of tool is responsible for following accepted safety codes such as those published by the American National Standards Institute (ANSI).
- Operate machine for one minute before application to workpiece to determine if machine is working properly and safely before work begins.
- Always disconnect power supply before changing abrasive/accessory or making machine adjustments.
- Inspect abrasives/accessories for damage or defects prior to installation on tools.
- Please refer to Dynabrade's Warning/Safety Operating Instructions Tag (Reorder No. **95903**) for more complete safety information.
- **Warning:** Hand, wrist and arm injury may result from repetitive work, motion and overexposure to vibration.

"Autobrade Red" Tool Warranty

Following the reasonable assumption that any inherent defect which might prevail in a product will become apparent to the user within **6 months** from the date of purchase, "Autobrade Red" tools are warranted against defects in workmanship and materials under normal use and service.

We shall, at our option, repair or replace at our factory, any "Autobrade Red" tool which shall, within 6 months after delivery to the original purchaser, indicate upon our examination to have been defective.

Our obligation is contingent upon proper use of "Autobrade Red" tools in accordance with factory recommendations, instructions and practices.

The warranty shall not apply in these cases:

- | | |
|---|---|
| 1. Normally wearable parts such as bearings, rotor blades, etc. | 5. Tools requiring normal tune-up or cleaning. |
| 2. Consumables such as sanding pads, etc. | 6. Tools being used after they are badly worn such as using ratchet with worn yoke. |
| 3. Misuse, neglect in maintaining tool or tool modification. | 7. Ratchets, anvils damaged by excessive hand torquing. |
| 4. Lack of lubrication or evidence of rust, dirt or corrosion. | 8. Use in production-type applications. |

Products to be considered for warranty must be sent back to our factory, transportation prepaid by the user. Please send tool back to attention of "Repair Department" with note fully explaining the nature of the problem along with a copy of original invoice indicating model and serial number.

Return product to:

Dynabrade, Inc.

Attn: Repair Department

8989 Sheridan Dr.

Clarence, NY **14031**

Visit Our Web Site: www.dynabrade.com

Email: Autoaft@dynabrade.com

Autobrade Red[®]
Air Tools For The Body Shop

DYNABRADE[®]