



AUTOMOTIVE

Parts Page Reorder No. APD02•06
Effective July, 2002
Supersedes APD01•03

1/4" Die Grinder

.5 Hp/7°

Air Motor and Machine Parts

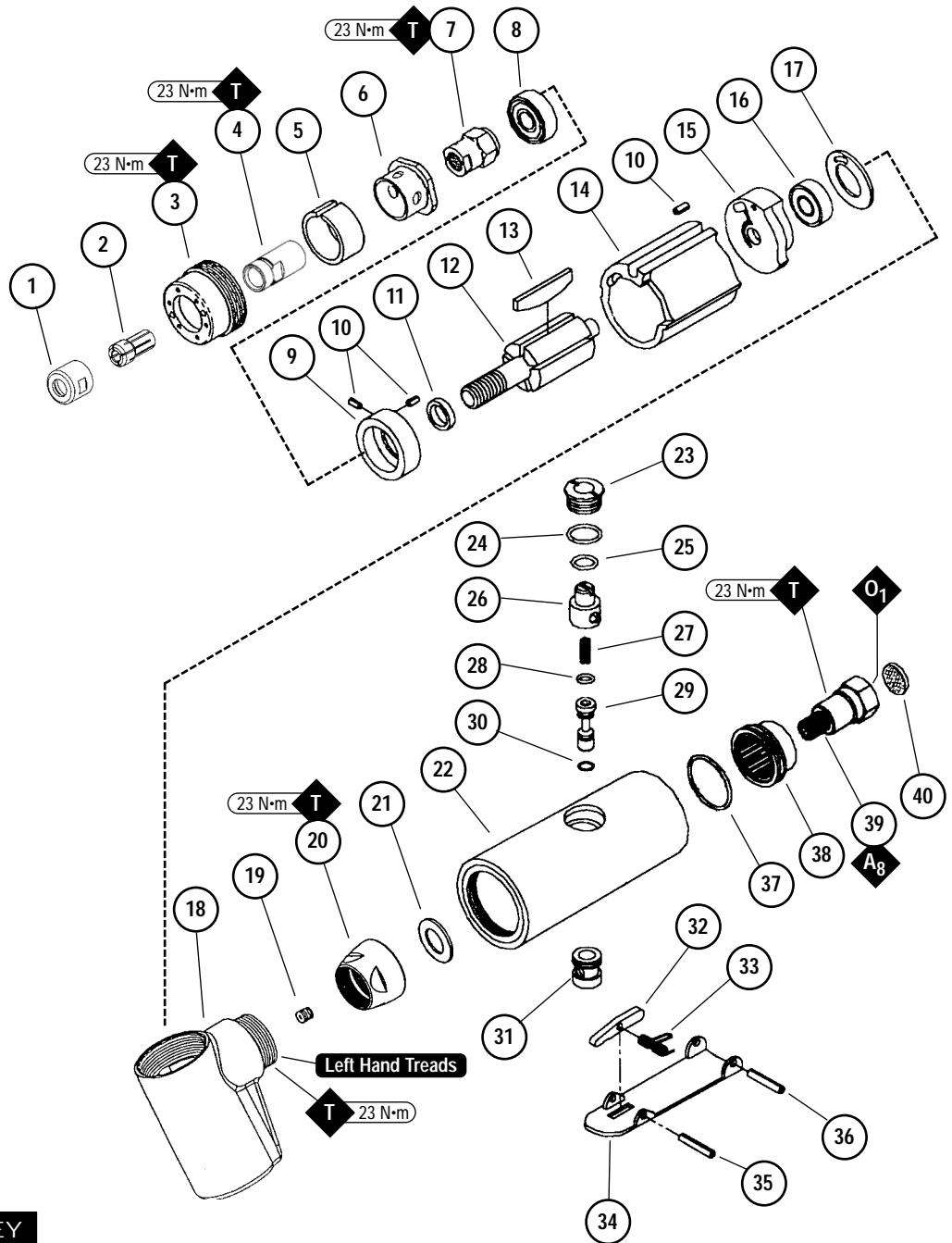
Model:
18020

WARNING

Always operate, inspect and maintain this tool in accordance with the Safety Code for portable air tools (ANSI B186.1) and any other applicable safety codes and regulations. Please refer to Dynabrade's Warning/Safety Operating Instructions for more complete safety information.

Index Key

No.	Part	Description
1	50012	Collet Cap
2	50013	1/4" Collet Insert
3	18864	Lock Ring
4	50011	Collet Body
5	18863	Silencer
6	18862	Air Control Ring
7	18861	Rotor Nut
8	18827	Bearing
9	18874	Front End Plate
10	18821	Pin (3)
11	18825	Rotor Spacer
12	18870	Rotor
13	18823	Rotor Blade (4/pkg.)
14	18822	Cylinder
15	18820	Rear End Plate
16	18819	Bearing
17	18869	Gasket
18	18865	7" Housing
19	18867	Plug
20	18446	Lock Ring
21	18866	Washer
22	18400	Housing
23	18420	Valve Screw
24	18419	O-Ring
25	18418	O-Ring
26	18417	Regulator
27	18416	Spring
28	18415	O-Ring
29	18413	Valve Stem
30	18414	O-Ring
31	18412	Valve Bushing
32	18411	Stop Rod
33	18410	Safety Lever Spring
34	18408	Throttle Lever
35	18409	Spring Pin
36	18407	Lever Pin
37	18403	O-Ring
38	18868	Exhaust Plug
39	18405	Air Inlet
40	18439	Filter



KEY

- O** Oil: O₁ = Air Lube
- A** Adhesive: A_g = Loctite #567
- T** Torque: N•m x 8.85 = In. - lbs.

Autobrade Red Important Operating, Maintenance and Safety Instructions

Carefully read all instructions before operating or servicing any Dynabrade® Abrasive Power Tool.

Warning: Hand, wrist and arm injury may result from repetitive work motion and overexposure to vibration.

Important: All Dynabrade air tools must be used with a Filter-Regulator-Lubricator to maintain all warranties.

Operating Instructions:

Warning: Eye, face, respiratory, sound and body protection must be worn while operating power tools. Failure to do so may result in serious injury or death. Follow safety procedures posted in workplace.

1. With power source disconnected from tool, securely fasten abrasive/accessory on tool.
2. Install air fitting into inlet bushing of tool. **Important:** Secure inlet bushing of tool with a wrench before attempting to install the air fitting to avoid damaging valve body housing.
3. Connect power source to tool. Be careful not to depress throttle lever in the process.
4. Check tool speed with tachometer. If tool is operating at a higher speed than the RPM marked on the tool or operating improperly, the tool should be serviced to correct the cause before use.
5. Air tools are intended for use in explosive atmospheres and are not insulated for contact with electrical power sources. Sanding/Grinding certain materials can create explosive dust. It is the employers responsibility to notify the user of acceptable dust levels. Sanding/Grinding can cause sparks which can cause fires or explosions. It is the users responsibility to make sure the work area is free of flammable materials.

Maintenance Instructions:

1. Check tool speed regularly with a tachometer. If tool is operating at a higher speed than the RPM marked on the tool, the tool should be serviced to correct the cause before use.
2. Some silencers on air tools may clog with use. Clean and replace as required.
3. All Dynabrade rotary vane style air motors should be lubricated. Dynabrade recommends one drop of air lube per minute for each 10 SCFM (example: if the tool specifications state 40 SCFM, set the drip rate of your filter-lubricator at 4 drops per minute). Dynabrade Air Lube (P/N 95842: 1 pt. 473 ml.) is recommended.
4. It is strongly recommended that all Dynabrade rotary vane air tools be used with a Filter-Regulator-Lubricator to minimize the possibility of misuse due to unclean air, wet air or insufficient lubrication. Dynabrade recommends the following: **11405** Air Line Filter-Regulator-Lubricator — Provides accurate air pressure regulation, two-stage filtration of water contaminants and micro-mist lubrication of pneumatic components. Operates 40 SCFM @ 100 PSIG has 3/8" NPT female ports.
5. Use only genuine Dynabrade replacement parts. To reorder replacement parts, specify the **Model #**, **Serial #**, and **RPM** of your machine.
6. Mineral spirits are recommended when cleaning the tool and parts. Do not clean tool or parts with any solvents or oils containing acids, esters, keytones, chlorinated hydrocarbons or nitro carbons.
7. DO NOT clean or maintain air tools with chemicals that have a low flash point (example: WD-40®).

Safety Instructions:

Products offered by Dynabrade should not be converted or otherwise altered from original design without expressed written consent from Dynabrade, Inc.



- **Important:** User of tool is responsible for following accepted safety codes such as those published by the American National Standards Institute (ANSI).
- Operate machine for one minute before application to workpiece to determine if machine is working properly and safely before work begins.
- Always disconnect power supply before changing abrasive/accessory or making machine adjustments.
- Inspect abrasives/accessories for damage or defects prior to installation on tools.
- Please refer to Dynabrade's Warning/Safety Operating Instructions Tag (Reorder No. 95903) for more complete safety information.
- **Warning:** Hand, wrist and arm injury may result from repetitive work, motion and overexposure to vibration.

Autobrade Red Tool Warranty

Following the reasonable assumption that any inherent defect which might prevail in a product will become apparent to the user within **6 months** from the date of purchase, "Autobrade Red" tools are warranted against defects in workmanship and materials under normal use and service.

We shall, at our option, repair or replace at our factory, any "Autobrade Red" tool which shall, within 6 months after delivery to the original purchaser, indicate upon our examination to have been defective.

Our obligation is contingent upon proper use of "Autobrade Red" tools in accordance with factory recommendations, instructions and practices.

The warranty shall not apply in these cases:

- | | |
|---|---|
| 1. Normally wearable parts such as bearings, rotor blades, etc. | 5. Tools requiring normal tune-up or cleaning. |
| 2. Consumables such as sanding pads, etc. | 6. Tools being used after they are badly worn such as using ratchet with worn yoke. |
| 3. Misuse, neglect in maintaining tool or tool modification. | 7. Ratchets, anvils damaged by excessive hand torquing. |
| 4. Lack of lubrication or evidence of rust, dirt or corrosion. | 8. Use in production-type applications. |

Products to be considered for warranty must be sent back to our factory, transportation prepaid by the user. Please send tool back to attention of "Repair Department" with note fully explaining the nature of the problem along with a copy of original invoice indicating model and serial number.

Return product to:

Dynabrade, Inc.

Attn: Repair Department

8989 Sheridan Dr.

Clarence, NY 14031

Visit Our Web Site: www.dynabrade.com

