



**Model:**  
**18062**

**AUTOMOTIVE**

Parts Page Reorder No. APD00•04  
Effective April, 2000

# 1/2" Impact Wrench

## Free Speed 7,000 RPM

*Air Motor and Machine Parts*

KEY	
<b>O</b>	Oil: O <sub>1</sub> = Air Lube O <sub>2</sub> = SAE 20 Grade Oil
<b>A</b>	Adhesive: A <sub>2</sub> = Loctite #271
<b>T</b>	Torque: N•m x 8.85 = In. - lbs.

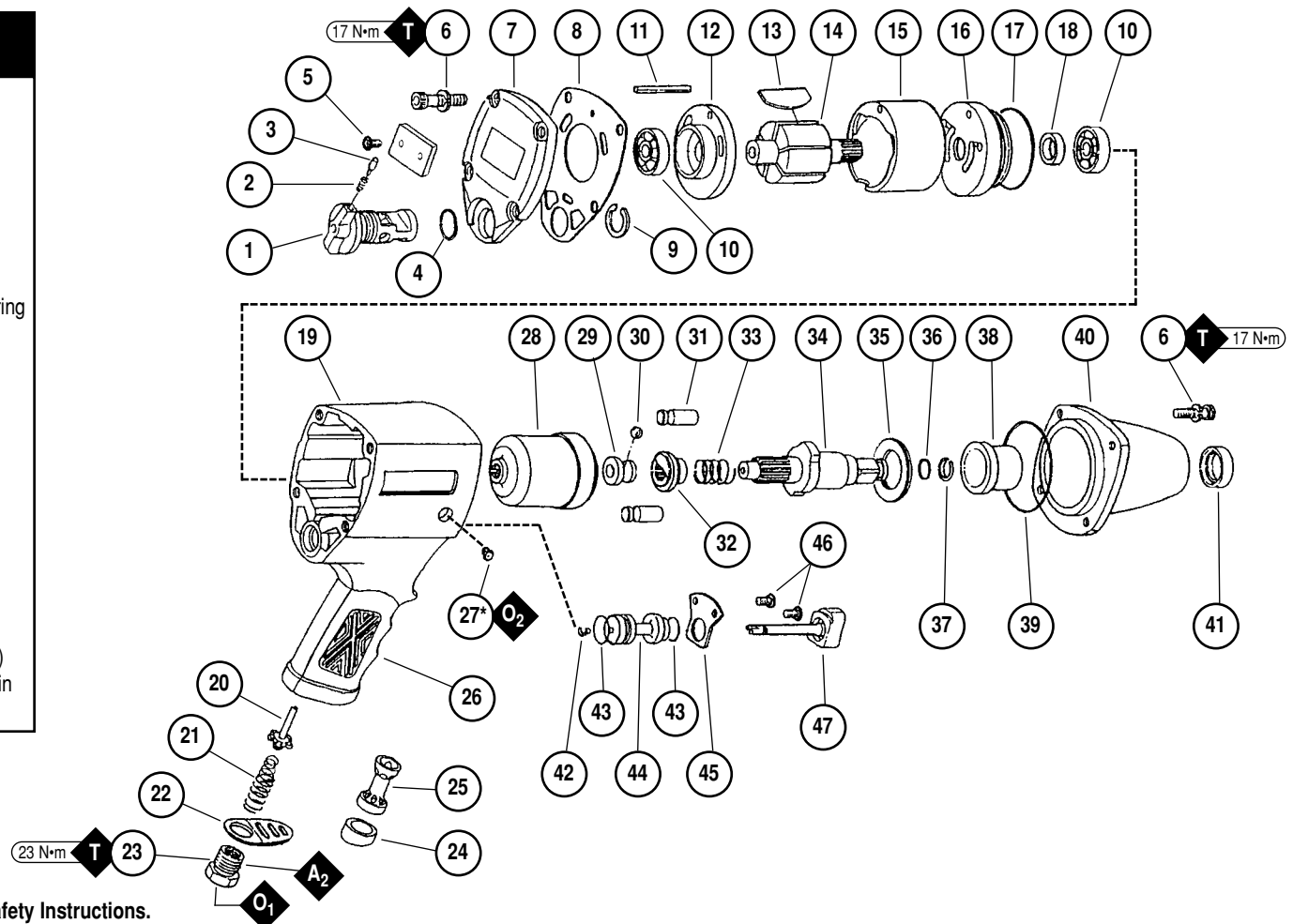
### ⚠ WARNING

Always operate, inspect and maintain this tool in accordance with the Safety Code for portable air tools (ANSI B186.1) and any other applicable safety codes and regulations. Please refer to Dynabrade's Warning/Safety Operating Instructions for more complete safety information.

#### Index Key

No. Part # Description

1	18709	Air Reg. Reverse	25	18755	Power Silencer
2	18710	Spring	26	18782	Rubber Handle
3	18711	Stop Pin	27	18652	Oil Plug
4	18659	O-Ring	28	18768	Hammer Cage
5	18696	Rivet Screw (2)	29	18769	Cam Ball Pilot
6	18694	Screw w/ Washer (8)	30	18770	Cam Ball
7	18759	End Cap	31	18771	Hammer Pin (2)
8	18758	End Gasket	32	18772	Hammer Cam
9	18712	C-Ring	33	18773	Cam Release Spring
10	18760	Ball Bearing (2)	34	18774	Std. Anvil 1/2" sq.
11	18717	Guide Pin	35	18775	Anvil Spacer
12	18761	Rear Plate	36	18776	O-Ring
13	18763	Rotor Blade (6/pkg.)	37	18777	Retaining Ring
14	18762	Rotor	38	18779	Anvil Bushing
15	18764	Cylinder	39	18781	O-Ring
16	18767	Front Plate	40	18778	Steel Housing
17	18766	O-Ring	41	18780	Oil Seal
18	18765	Oil Seal	42	18653	E-Ring
19	18751	Motor Housing	43	18753	O-Ring (2)
20	18665	Valve Stem	44	18754	Throttle Bushing
21	18666	Throttle Spring	45	18703	Stop Cover
22	18757	Exhaust Deflector	46	18658	Tapping Screw (2)
23	18668	Hose Adapter	47	18752	Throttle Trigger Pin
24	18756	Rubber Support			



\*Fill Amount – 1.5 FL. OZ. or (40 cc).

See reverse side for Important Operating, Maintenance and Safety Instructions.

## Autobrade Red Important Operating, Maintenance and Safety Instructions

Carefully read all instructions before operating or servicing any Dynabrade® Abrasive Power Tool.

**Warning:** Hand, wrist and arm injury may result from repetitive work motion and overexposure to vibration.

**Important:** All Dynabrade air tools must be used with a Filter-Regulator-Lubricator to maintain all warranties.

### Operating Instructions:

**Warning:** Eye, face and body protection must be worn while operating power tools. Failure to do so may result in serious injury or death. Follow safety procedures posted in workplace.

1. With power source disconnected from tool, securely fasten abrasive/accessory on tool.
2. Install air fitting into inlet bushing of tool. **Important:** Secure inlet bushing of tool with a wrench before attempting to install the air fitting to avoid damaging valve body housing.
3. Connect power source to tool. Be careful not to depress throttle lever in the process.
4. Check tool speed with tachometer. If tool is operating at a higher speed than the RPM marked on the tool or operating improperly, the tool should be serviced to correct the cause before use.

### Maintenance Instructions:

1. Check tool speed regularly with a tachometer. If tool is operating at a higher speed than the RPM marked on the tool, the tool should be serviced to correct the cause before use.
2. Some silencers on air tools may clog with use. Clean and replace as required.
3. All Dynabrade rotary vane style air motors should be lubricated. Dynabrade recommends one drop of air lube per minute for each 10 SCFM (example: if the tool specifications state 40 SCFM, set the drip rate of your filter-lubricator at 4 drops per minute). Dynabrade Air Lube (P/N **95842**: 1pt. 473ml.) is recommended.
4. It is strongly recommended that all Dynabrade rotary vane air tools be used with a Filter-Regulator-Lubricator to minimize the possibility of misuse due to unclean air, wet air or insufficient lubrication. Dynabrade recommends the following: **11405** Air Line Filter-Regulator-Lubricator — Provides accurate air pressure regulation, two-stage filtration of water contaminants and micro-mist lubrication of pneumatic components. Operates 40 SCFM @ 100 PSIG has 3/8" NPT female ports.
5. Use only genuine Dynabrade replacement parts. To reorder replacement parts, specify the **Model #**, **Serial #**, and **RPM** of your machine.
6. Mineral spirits are recommended when cleaning the tool and parts. Do not clean tool or parts with any solvents or oils containing acids, esters, keytones, chlorinated hydrocarbons or nitro carbons.

### Safety Instructions:

Products offered by Dynabrade should not be converted or otherwise altered from original design without expressed written consent from Dynabrade, Inc.



- **Important:** User of tool is responsible for following accepted safety codes such as those published by the American National Standards Institute (ANSI).
- Operate machine for one minute before application to workpiece to determine if machine is working properly and safely before work begins.
- Always disconnect power supply before changing abrasive/accessory or making machine adjustments.
- Inspect abrasives/accessories for damage or defects prior to installation on tools.
- Please refer to Dynabrade's Warning/Safety Operating Instructions Tag (Reorder No. **95903**) for more complete safety information.
- **Warning:** Hand, wrist and arm injury may result from repetitive work, motion and overexposure to vibration.

### Autobrade Red Tool Warranty

Following the reasonable assumption that any inherent defect which might prevail in a product will become apparent to the user within **6 months** from the date of purchase, "Autobrade Red" tools are warranted against defects in workmanship and materials under normal use and service.

**We shall, at our option, repair or replace at our factory, any "Autobrade Red" tool which shall, within 6 months after delivery to the original purchaser, indicate upon our examination to have been defective.**

Our obligation is contingent upon proper use of "Autobrade Red" tools in accordance with factory recommendations, instructions and practices.

**The warranty shall not apply in these cases:**

1. Normally wearable parts such as bearings, rotor blades, etc.
2. Consumables such as sanding pads, etc.
3. Misuse, neglect in maintaining tool or tool modification.
4. Lack of lubrication or evidence of rust, dirt or corrosion.
5. Tools requiring normal tune-up or cleaning.
6. Tools being used after they are badly worn such as using ratchet with worn yoke.
7. Ratchets, anvils damaged by excessive hand torquing.
8. Use in production-type applications.

Products to be considered for warranty must be sent back to our factory, transportation prepaid by the user. Please send tool back to attention of "Repair Department" with note fully explaining the nature of the problem along with a copy of original invoice indicating model and serial number.

Return product to:  
Dynabrade, Inc.  
Attn: Repair Department  
8989 Sheridan Dr.  
Clarence, NY **14031**

Visit Our Web Site: [www.dynabrade.com](http://www.dynabrade.com)

