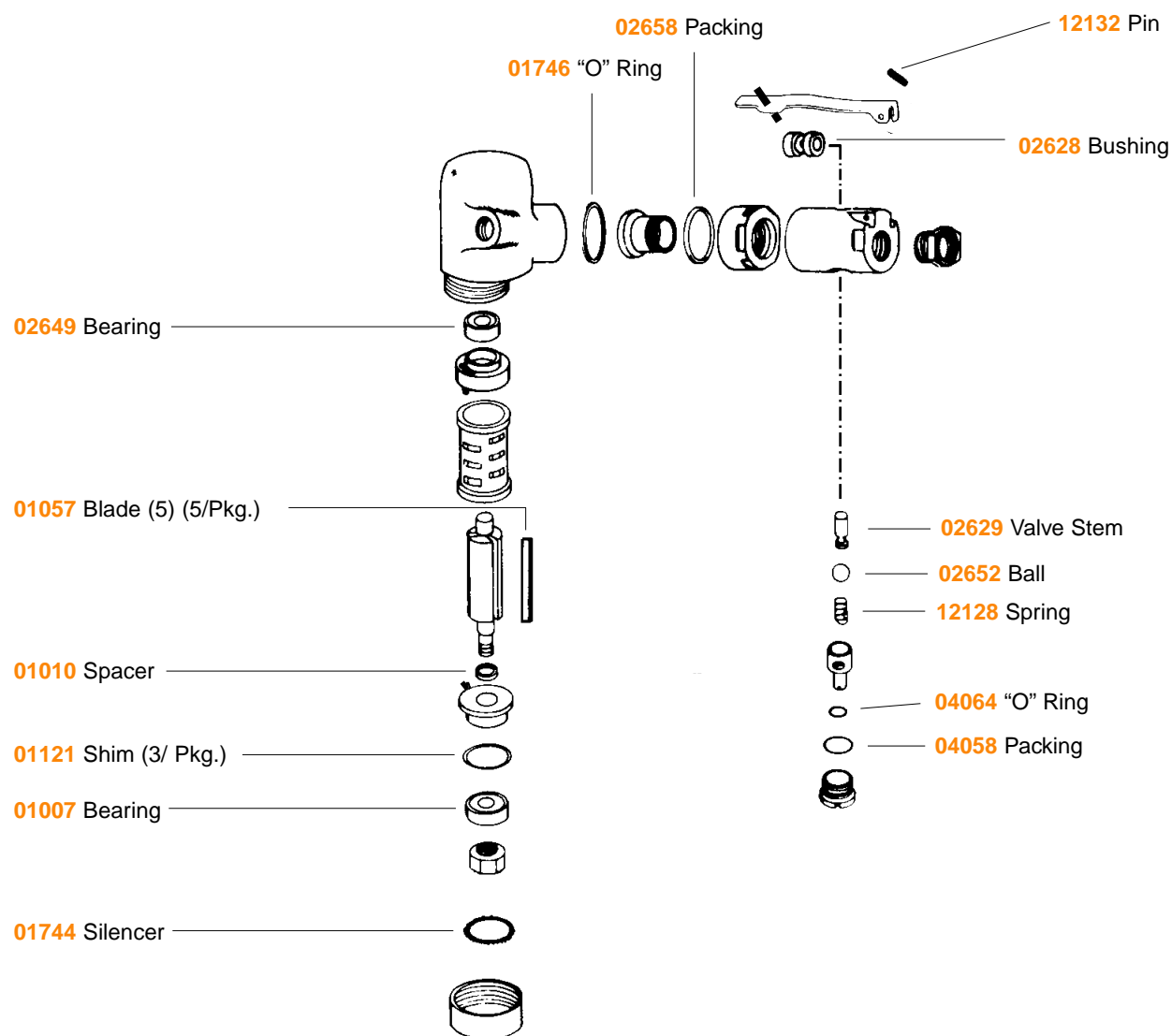


Parts Page Reorder No. PD92•1
Effective January, 1991

95840 Motor Tune-Up Kit

Refer to appropriate parts page for additional parts identification. Parts included in kit are identified by part number.



IMPORTANT:

The regular maintenance of any air tool will contribute to greater efficiency of tool and will prolong tool life. This kit contains replacement parts which are most susceptible to wear. An air tool may wear differently according to the application and operator. It is, therefore, recommended that while the tool is disassembled, all other parts not included in this kit be examined for excessive wear and be replaced as required.

NOTICE: Manufacturer's warranty is void if tool is disassembled before warranty expires.